



**DC** DEGREE C

# CAPABILITIES STATEMENT

**FABRICATION SERVICES**



## A DEGREE ABOVE IN FABRICATION

WITH MORE THAN 25 YEARS OF INDUSTRY EXPERTISE, OUR METAL FABRICATION DIVISION DELIVERS RELIABLE, HIGH-PERFORMANCE SOLUTIONS BUILT FOR STRENGTH AND PRECISION. FROM STAINLESS STEEL AND ALUMINIUM TO SHEET METAL AND STRUCTURAL STEEL, WE DESIGN AND MANUFACTURE WITH PURPOSE, EFFICIENCY, AND UNCOMPROMISING ACCURACY. FROM DUCTWORK, CLADDING, AND PIPE SYSTEMS TO PLATFORMS AND CONVEYORS, EVERY PRODUCT IS ENGINEERED FOR ENDURANCE, BUILT TO LAST.





# TABLE OF CONTENTS

## 1. Company & People

- Our Company Details
- Our Story: From local roots to state-wide leadership
- Our Services
- Vision, Purpose, and Values
- Management in Action: Quality, Safety, and Environment at work
- Meet the Team: Faces behind the Degree C difference

## 2. Services & Capability

- Who We Work With
- Fabrication Services Overview
- Design and Project Management
- Fabrication
- Installation and Decommissioning
- Piping Systems
- Insulation and Cladding
- Labour Hire
- Duct Fabrication
- Facilities and Resources

## 3. Featured Projects

- Simplot Ulverstone
- Incitec Pivot
- Aquatig

## 4. Contact Us

- Branch locations and details



**SHEET METAL PRODUCTS**

**INDUSTRIAL INSULATION**

**PROCESSING SYSTEMS**

**INDUSTRIAL CLADDING**

**GENERAL FABRICATION**

**INDUSTRIAL PIPE WORK**

**AIR-CONDITIONING DUCT & UNITS**

**TANKS & STORAGE UNITS**

**NOISE REDUCTION**

**STEAM & COLD PIPE SYSTEMS**

**STRUCTURAL STEEL WORK**

**CUSTOMISED TRAY BACKS & TOOLBOXES**

**HANDLING SYSTEMS & CONVEYORS**

# OUR DETAILS

## DEGREE C PTY LTD

**ACN:** 009 587 008

**ABN:** 16 009 587 008

2 FAIRAIR COURT

EAST ULVERSTONE TAS 7315

**PHONE:** (03) 6429 6800

**EMAIL:** INFO@DEGREEC.COM.AU

**WEB:** DEGREEC.COM.AU

## OCCUPATIONAL CONTRACTORS

LICENCE NO. 945105

## REFRIGERATION TRADING AUTHORITY

NO. AU01389

## TASFIRE DRY FIRE SERVICES

LICENCE NO. 077

**PUBLIC LIABILITY INSURANCE:** MARKEL AUSTRALIA

POLICY NO CV9839A25IZA (\$20 MILLION)

**WORKERS COMPENSATION:** CGU INSURANCE

POLICY NO. O/10-10475





## FROM THE CEO

At Degree C, we're proud to be Tasmania's largest and most diverse multi-trade company. For more than 60 years, we have delivered projects of every shape and size with a consistent focus on quality, safety, and reliability across every corner of the state.

Our diversity is our strength. With skilled tradespeople, managers, and engineers working across refrigeration, HVAC, electrical, and metal fabrication, we achieve results few others can. We operate across the residential sector, specialising in heating, cooling, and solar installations; the commercial sector, delivering large and complex projects in HVAC, fire detection, security, and electrical systems; and the industrial sector, where we provide electrical and instrumentation systems, industrial refrigeration plants, and complete metal fabrication projects from design through to manufacture and installation tailored to each client's needs.

Our dedicated service teams provide round-the-clock support in refrigeration, HVAC, fire, security, and electrical, ensuring peace of mind for our clients.

Our success is driven by our people. We strive to be the employer of choice across all disciplines, supporting our team to grow within the company and reach their full potential.

As we look ahead, our focus remains on providing solutions to our customers, supporting Tasmanian jobs, growing our people, and strengthening the partnerships that define our story. We're proud to deliver performance and professionalism to every degree.

- Tim Jordan



**Our diversity is our strength.**

FROM LOCAL ROOTS TO STATEWIDE SERVICE

## OUR STORY

**Degree C was established in Tasmania in the 1960s as a branch of a national industrial refrigeration company. Since then, Degree C has evolved to become a premier multi-trade contracting company. Locally owned since 1990, the company provides a diverse range of products and services to residential, commercial and industrial customers.**

Today we employ more than 320 Tasmanians at three branch locations across the state, including more than 180 tradespeople and apprentices. Our six diverse business streams work collaboratively to deliver an extensive range of products and services to our broad client base.

The Degree C name in Tasmania means quality, capability and professionalism, and is widely recognised as a key component in the supply chain across numerous Tasmanian industry sectors.

Our presence in each of the major population centres in Tasmania, coupled with an unwavering focus on building strong local relationships, ensures that we are available and responsive to our clients' needs.



# OUR SERVICES

1

## ELECTRICAL SERVICES

**CORE CAPABILITIES:**

- Industrial Installations
- Commercial Installations
- Fire Services
- Data, Communications and Fibre Optic
- Security, CCTV & Access Control
- Solar Power and Battery Storage

2

## MECHANICAL SERVICES

**CORE CAPABILITIES:**

- Commercial & Industrial Installations
- Heating & Cooling Systems
- General Exhaust Ventilation
- Kitchen Exhaust Ventilation
- Fuel & Medical Gas
- Drafting Services & BIM

3

## FABRICATION SERVICES

**CORE CAPABILITIES:**

- Sheetmetal Products
- Industrial Insulation & Cladding
- Processing Systems
- General Fabrication
- Industrial Pipe Work
- Fabrication Design & Engineering



## REFRIGERATION SERVICES

4

### CORE CAPABILITIES:

- Traditional Cold Rooms & Refrigeration
- Industrial & Commercial Refrigeration
- Process Cooling & Heating
- Maintenance & Repair
- Fruit & Vegetable Cooling & Storage
- Refrigeration Design & Engineering

## SERVICE & REPAIR

5

### CORE CAPABILITIES:

- 24/7 Breakdown Response
- Scheduled Maintenance & Servicing
- Electrical Fault Diagnosis & Repairs
- HVAC & Refrigeration Servicing
- Preventative Maintenance Planning
- Asset Tracking & Reporting

## RESIDENTIAL SOLUTIONS

6

### CORE CAPABILITIES:

- Heating & Cooling Systems
- Service & Installation
- Solar Power & Battery Storage
- EV Charging Solutions
- Daikin Super Dealer
- Mitsubishi Electric Diamond Dealer

FREE C







## OUR VISION

To be the most influential multi-disciplined trades-based company in our state, with powerful market presence in all of our business sectors.

Our brand is our reputation for an uncompromising approach to maximising customer benefit, competitiveness, innovation and to the employment of the very best people in our industries.

## OUR PURPOSE

To promote economic, social, and environmental benefits for our communities and our stakeholders through the provision of specialist trade products and services to industry.

## OUR VALUES

We put our people first in every decision we make.

We protect, nurture, and trust in each other.

We are truthful and equitable in every action we take.

We engage adversity to build our strength and drive continuous reform.



**EFFICIENCY** Our focus.



**SUSTAINABILITY** Our future.



**INNOVATION** Our edge.

QUALITY, SAFETY, AND ENVIRONMENT

# MANAGEMENT IN ACTION

Degree C's Integrated Management System brings together quality, occupational health and safety, and environmental management – ensuring every project is delivered to the highest professional and regulatory standards.

Our systems are third-party audited and accredited, providing confidence to our clients and teams that every process, procedure, and outcome meets nationally recognised benchmarks.



Our values guide more than our work – they shape our culture. They're reflected in how we support apprentices, celebrate achievements, communicate with clients, and contribute to our local communities.

At Degree C, our success isn't measured only by the projects we complete, but by the way we work together to achieve them.



## QUALITY

Quality management at Degree C covers every stage of a project – from tendering and negotiation through to planning, monitoring, and post-implementation review. We focus on continuous improvement, ensuring our work consistently meets and exceeds client expectations.

## SAFETY

Safety underpins everything we do. Our workplace health and safety systems provide structure, support, and compliance across all levels. Every supervisor holds a Certificate III in OHS, and our SQE team's WHS-qualified professionals drive a proactive, safety-first culture.



## ENVIRONMENT

We take environmental responsibility seriously. Management and staff work together to reduce environmental risk through training, innovation, and accountable project delivery. Every team member plays a part in minimising impact and supporting sustainable outcomes for Tasmania's future.

### WE HOLD THIRD-PARTY CERTIFICATION FOR:

ISO 9001:2015 – Quality Management Systems

ISO 45001:2018 – Occupational Health & Safety Management Systems

ISO 14001:2015 – Environmental Management Systems



MEET THE TEAM

# FACES BEHIND THE DEGREE C DIFFERENCE

At Degree C, our greatest strength has always been our people. From apprentices learning their craft to project managers leading complex installations, every member of our team plays a vital role in delivering the quality, safety, and innovation our clients trust us for.

We're proud to employ more than 320 Tasmanians across three locations, representing a diverse mix of trades, talents, and experiences. Together, we share a common goal – to build, connect, and contribute to the future of our state.

Our people bring more than technical expertise to the job. They bring integrity, pride, and the passion to find smarter, safer, and more sustainable ways to work. Their dedication is what turns plans into projects, and projects into progress.

This is the team behind the Degree C name; hardworking, skilled, and committed to doing great work for every client, every day.





**TIM JORDAN**  
**Chief Executive Officer & General  
Manager of North West Operations**

An electrician by trade, Tim has worked in the industry for over 25 years and built his career at Degree C, from working on the tools as a tradesperson to now serving as CEO.

He's passionate about delivering high-quality service and practical solutions for our clients, while creating an environment where our people can grow and succeed.

Committed to continuous learning, he has completed a Diploma in Project Management, the Tasmanian Leaders Program, the Australian Institute of Company Directors Course, and a Master of Business Administration.

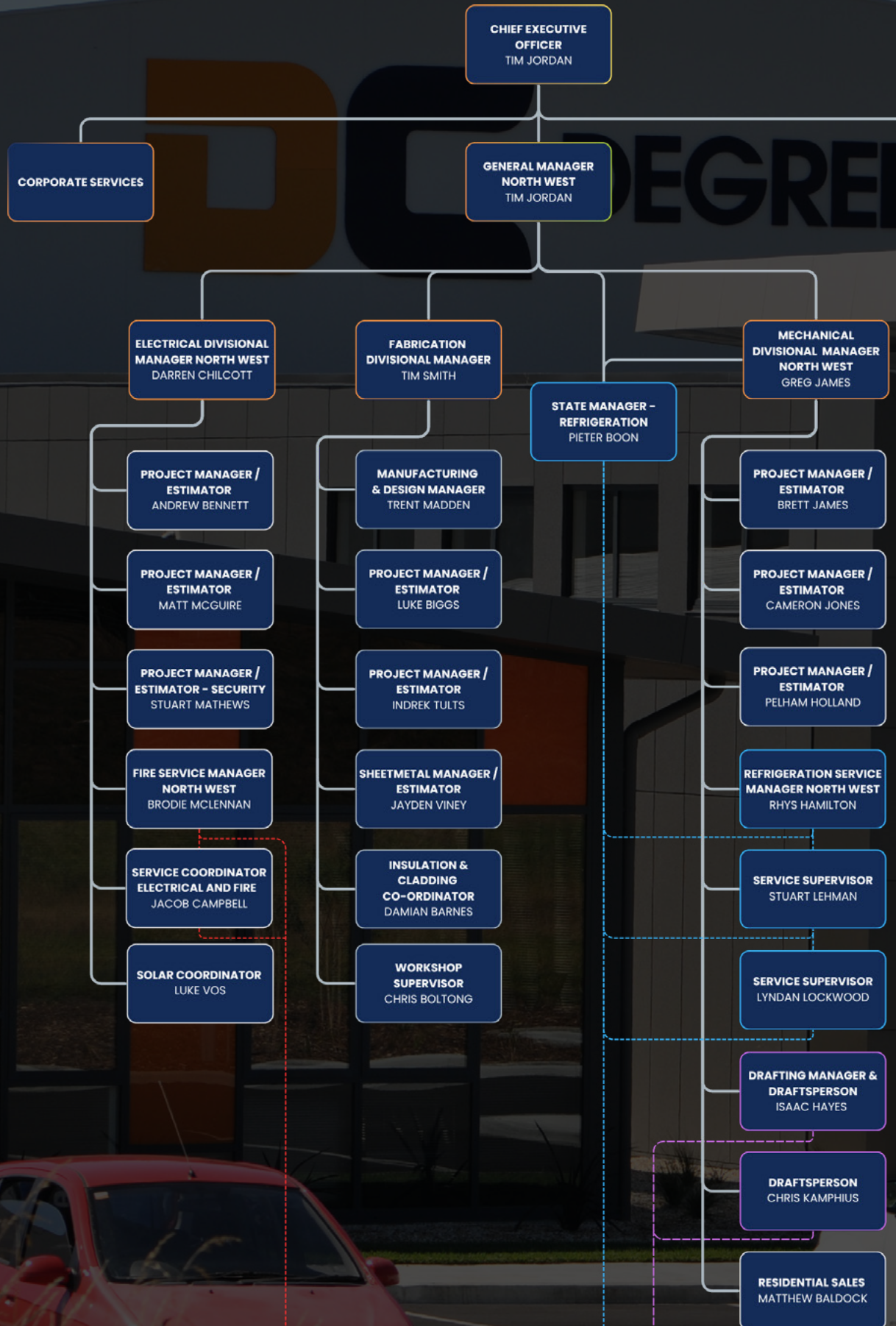


**CRAIG RIBBON**  
**General Manager  
North / South Regions**

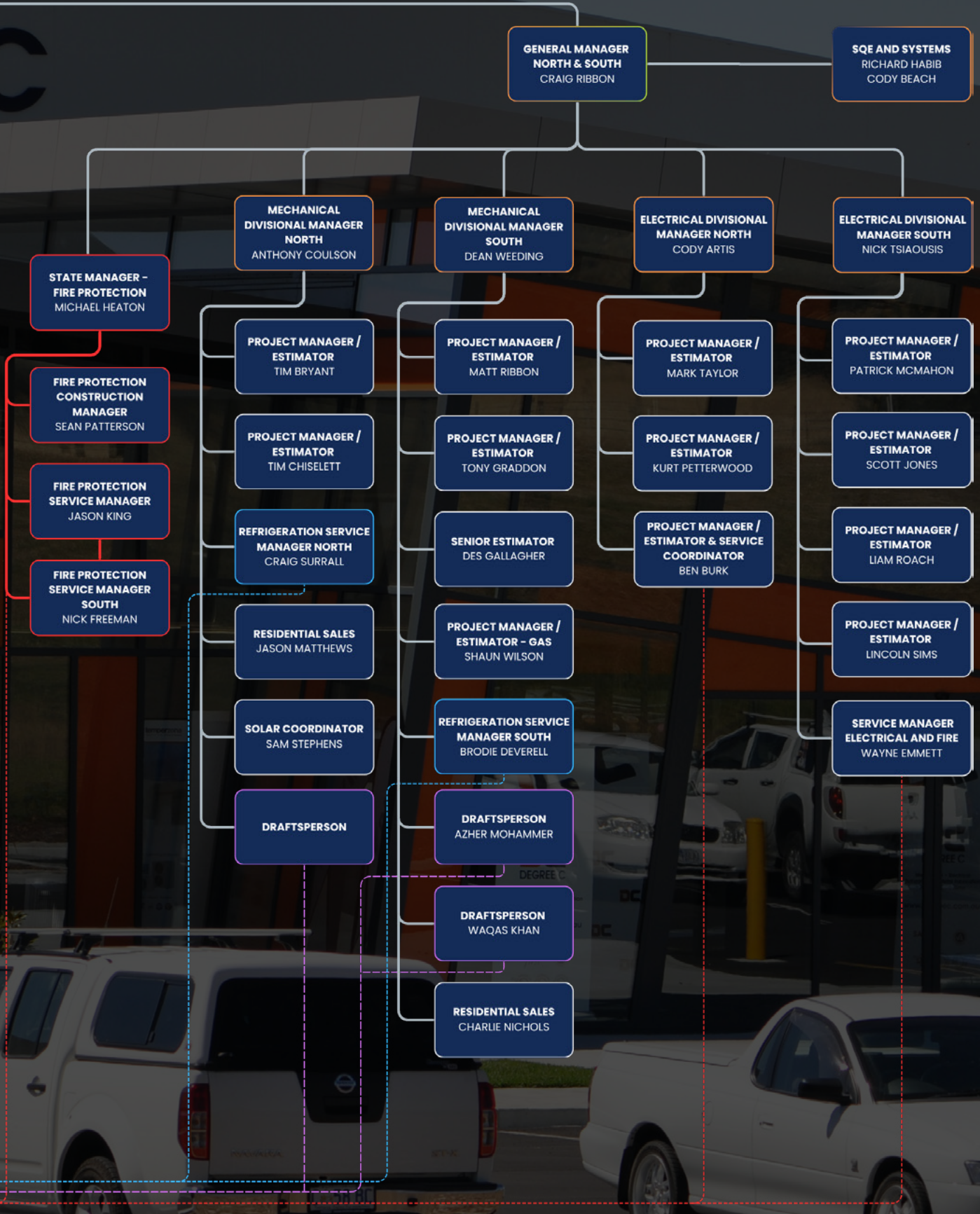
With more than 25 years of experience in the electrical and mechanical services industry, Craig has built a career centred on leading high-performing teams to deliver quality outcomes across complex and technically demanding projects.

Beyond project delivery, Craig is deeply committed to developing people and strengthening organisational capability. He takes pride in fostering a culture of excellence where collaboration, accountability, and continuous improvement are part of everyday operations.

# ORGANISATION CHART



**BOARD**  
 CHAIRMAN: CRAIG EDMUNDS  
 CHIEF FINANCIAL OFFICER: MARK NUGENT  
 CHIEF EXECUTIVE OFFICER: TIM JORDAN  
 NON EXECUTIVE DIRECTOR: MICHAEL ROGERS  
 DIRECTOR: CRAIG RIBBON





# FABRICATION SERVICES OVERVIEW

Our Fabrication Division is a Tasmanian leader in the delivery of high quality steel, stainless steel, aluminium and sheet metal products.

With more than 25 years' experience, our primary focus is to satisfy our customers with timely delivery and competitive pricing on a range of commercial products.

Our state-of-the-art manufacturing facility employs more than 30 highly skilled tradespeople with the capability to manage your project from design through to final installation.

## **Sheet Metal Products**

- Air-conditioning duct and units
- Tanks, storage units and bins
- Chutes
- Materials handling systems
- Conveyors
- Tables, benches and trolleys
- Custom made toolboxes

## **Industrial Insulation & Cladding for**

- Steam and cold pipe systems
- Hot and cold vessels
- Metal cladding
- External duct work insulation
- Noise reduction



### **Industrial Pipe Work**

- Steam and refrigeration pipe work
- Stainless Steel pipe and tube systems

### **Processing Systems**

Our team is experienced in the delivery of complex and customised processing systems to meet individual customer requirements.

We can install new systems or upgrade and modify your existing machinery.

### **General Fabrication**

Computerised manufacturing processes enable the fabrication of a wide range of general products designed to meet your unique specifications:

- Platforms, access stairs and ladders
- Structural steel work
- Customised tray backs and toolboxes

# INDUSTRIES WE SERVICE



**AGRICULTURE**



**AQUACULTURE**



**CONSTRUCTION**



**CEMENT**



**CHEMICAL**



**DOMESTIC**



**FOOD PROCESSING**



**PHARMACEUTICAL**



**HOSPITALITY**



**ENERGY, WATER, AND  
WATER TREATMENT**



**MINING**



**TRANSPORTATION &  
STORAGE**

# OUR MAJOR CLIENTS

ASHGROVE

CEMENT  
AUSTRALIA

Fresh  
Freight

Betta  
MILK

McCain

EST. 1933  
Greenham

IXOM



Extractas  
Bioscience

HARVEST  
MOON

Botanical Resources  
AUSTRALIA



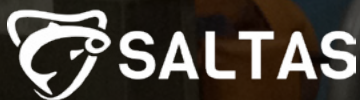
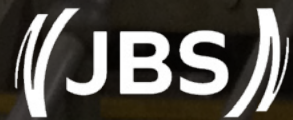
Fairbrother

hazellbros

Cadbury

Fonterra™

(JBS)  
HUON



# DESIGN & PROJECT MANAGEMENT

**Degree C offers design, certification, drafting, manufacturing, project management and installation solutions for all types of businesses, including, but not limited to:**

- Materials handling systems
- Refrigeration systems
- Plant and equipment, including hydrocoolers and conveyor systems
- Safety improvements and systems
- Accessibility changes or additions
- Production improvements or value adding
- Reliability improvement systems
- Complete construction projects including electrical, pneumatics, control and commissioning for true turnkey systems.

Degree C also specialises in one-off design challenges that can resolve any industrial problems, resulting in a final cost effective solution.







# FABRICATION SERVICES

**Degree C can undertake the fabrication of projects small and large including, but not limited to:**

- Stainless specialty products
- Conveyors – trough belts- modular plastic – screw – chain rakes – hygienic
- Tanks – round – flat sided – small – large
- Chutes both large and small
- Benches from hospital grade stainless to mine workshop heavy steel
- Handrails and balustrading
- Electrical and control cabinets
- Structural steelwork for buildings, platforms or walkways
- Stairways, steps and ladders
- Transmission yard steel work – landing gantries, switch posts, light poles etc
- Pump skids, machinery bases, motor mount plates
- Monorails and lifting frames
- Hoppers – fixed, trailer-mounted, container-based.
- Breakdown repairs
- Toolboxes – aluminium, stainless steel, galvanised etc
- Ute backs
- Flashings
- Ducting and extraction hoods
- Sandwich panel works (Bondor)







# ON-SITE INSTALLATION & DECOMMISSIONING

**Complete project works, removal of redundant plant, equipment and materials or installation of new plant, equipment and services but not limited to the following.**

- Installation of machinery, equipment and manufactured items
- Engage and manage sub-contractors to complete complementing work alongside our Degree C workforce.
- On site building structures or plant erection.
- Installation of piping, pumping, storage and associated process equipment.
- Mechanical services installation
- Shutdown and breakdown works (24 hour availability)
- Site insulation and cladding
- Development and implementation of crane lifting plans and procedures
- Site balustrading and handrails
- Process machinery and conveyor installation







# PIPING SYSTEMS

**Highly experienced and qualified trades that complete specialised pipework fabrication and installation projects for many and varied applications, be it potable water through to high viscosity fuel.**

- Coded welding of piping systems to AS 4041-1998 pressure or hazardous
- Piping from stainless steel, mild steel, aluminium, ABS, Poly, PVC, and Copper etc.
- Stainless tube
- Purge welded
- Electrical conduits
- Threaded
- Victaulic - grooved and shouldered
- Ferruled or hydraulic compression fitting
- Socket weld, electrofusion and plate fusion welded
- Bracketing
- Site run or pre-fabricated
- Pump down and cutting in of lines
- Pipe and weld testing by pneumatic, hydraulic or non-destructive testing
- Insulation and cladding of piping systems.







# INSULATION & CLADDING

**As one of the largest insulation and cladding companies in the state and employing the highest skilled tradesmen for all insulating and cladding projects.**

We have all the equipment and key skills to ensure the completion of an energy efficient and professional installation.

- Thermal retention of hot or cold liquids and gases
- Thermal efficiency improvements
- Personnel protection
- Piping systems
- Tanks, hoppers, boilers and vessels
- Ducting
- Sandwich panel works (Bondor)
- Condensation mitigation









# LABOUR HIRE

Supporting an outstanding retention rate of tradesmen we can offer highly skilled and qualified trades to meet all industry needs.

Our trades are multi skilled with many holding multiple high risk licences.

- Coded welders for pressure or hazardous situations
- Boilermaker/Welders (Engineering fabrication trade heavy)
- Sheet metal tradesmen (Engineering fabrication trade light)
- Insulators and cladders
- Specialist stainless and aluminium fabricators
- Trades assistants/labourers
- High risk licenced and competent Dogmen (DG) Basic riggers (RB)  
Intermediate riggers (RI) Crane operators (CN& CB) Elevated work platform operators (WP) Forklift operators (LF) Basic scaffolders (SB)
- Confined space trained personnel
- All employees have white cards, are trained in manual handling and working at heights







# DUCT FABRICATION

**Ownership of state-of-the-art machinery has enabled the delivery of quality ducting for more than 30 years.**

- Galvanised, stainless, Colorbond, aluminium and mild steel
- Seal welded, Pittsburghed, lapped and riveted, spot welded
- Spiral wound duct or spiral welded
- Insulated internal and/or externally
- Double skinned
- Attenuators, fan plenums, cooling units
- Sandwich panel duct (Bondor)
- Commercial, industrial, residential

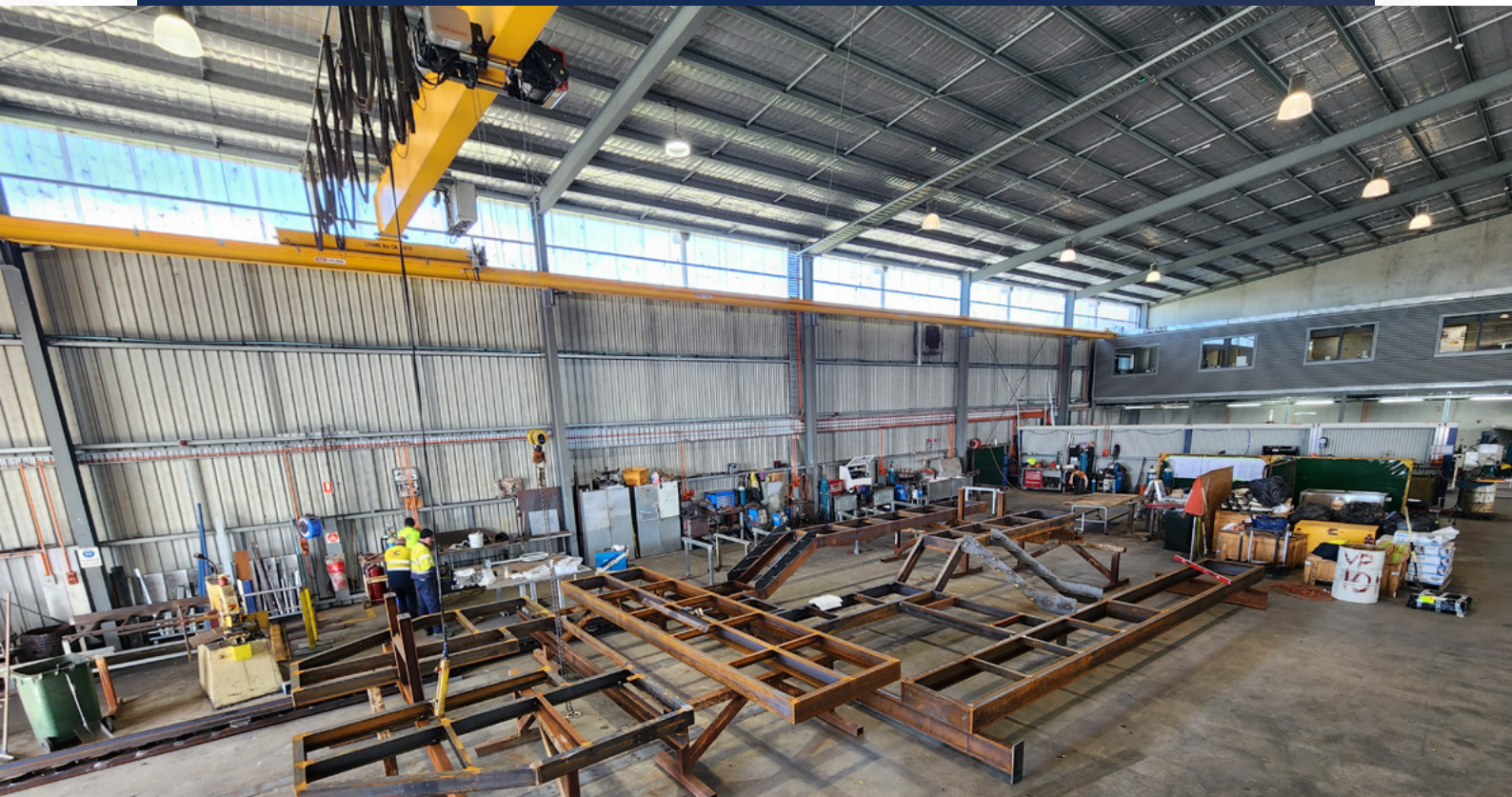


# FABRICATION FACILITIES & RESOURCES

**A purpose built facility in Ulverstone has made for a competitive and efficient business model with ample room to fabricate even the largest of projects.**

Having a flexible workshop layout gives the ability to fabricate hygienic stainless products and heavy steel industrial products at the same time in various ratios whilst maintaining specific work area separation.

- Extensive fabrication workshop with 2,000 square metres of undercover floor area and 4,000 square metres of hardstand yard with 24 hour CCTV surveillance
- Overhead crane with two x 2,500kg hooks, independently controlled covering 50% of the workshop
- CNC plasma table, capable of cutting up to 32mm mild steel, 20mm stainless steel and 20mm aluminium plate
- CNC Router with the capability to cut aluminium, composites and plastics with a bed 1400mm wide x 4000mm long x 200mm clear under carriage. Thicknesses previously cut to date are 75mm polystyrene, 30mm Plastic and 20mm Aluminium
- 120t CNC break press with sectional blade and die
- 1 x 6mm plate guillotine x 3100mm long and 1 x 3mm sheet guillotine x 2500mm long
- 12mm plate rollers 2500mm wide with section rollers for shs, rhs, pipe and angle
- 3t container mast fork, 2.5t site fork, 1.8t store fork plus 2 certified jib attachments.
- Specialist machinery - pipe and tube cutters, threading machines, hydraulic roll grooving machine
- Substantial quantity of mobile aluminium scaffolding
- Fleet of fully equipped service vehicles



# FEATURED PROJECTS



**CLIENT: SIMPLOT AUSTRALIA**  
**LOCATION: ULVERSTONE, TASMANIA**  
**COMPLETION: SEPTEMBER 2025**  
**DIVISIONS INVOLVED: FABRICATION +**  
**ELECTRICAL (CLIENT ENGAGED)**

FEATURED PROJECT

# WESP – SIMPLOT ULVERSTONE

## SCOPE OF WORKS

Degree C was engaged to supply, fabricate and install structural steel to support and provide access to the new Wet Electrostatic Precipitator (WESP) system. Our scope included completing detailed shop drawings of stainless-steel ducting, supplying materials, fabricating all components in-house, and managing the full installation and commissioning of the WESP unit.

## PROJECT HIGHLIGHTS

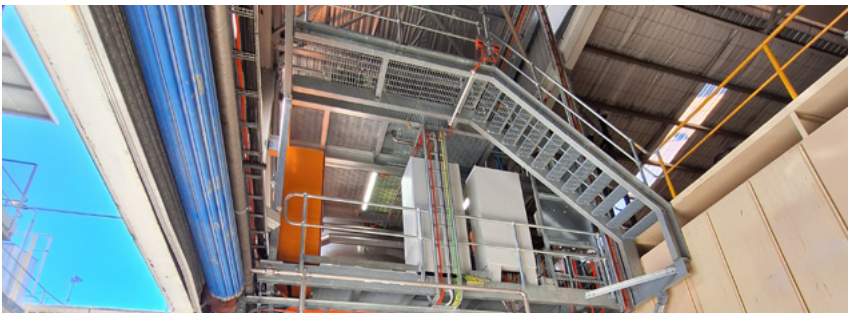
Delivered within a tight construction timeframe, maintaining schedule alignment with client operations.

Managed the complexity of installation on a live, operating factory site, requiring precise coordination and elevated safety standards.

All major works were executed on the roof, demanding strategic planning, safe lifting operations, and close collaboration with the client's engineering team.

## OUTCOME

The successful delivery of the WESP project enhanced Simplot's air quality management systems, improved operational efficiency, and demonstrated Degree C's capability to execute complex industrial projects under challenging conditions with precision and safety.





**CLIENT: INCITEC PIVOT LIMITED**  
**LOCATION: DEVONPORT, TASMANIA**  
**PROJECT STATUS: STAGES 1-3 COMPLETE**  
**DIVISIONS INVOLVED: FABRICATION**

FEATURED PROJECT

# INCITEC PIVOT DEVONPORT

## SCOPE OF WORKS

Degree C was engaged to deliver the staged recladding and structural refurbishment of the Incitec Pivot manufacturing facility in Devonport. Working within a live industrial environment, our team completed structural steel recoating, replacement of roof purlins, fibreglass roof and wall cladding, stainless steel flashings, and associated fabrication works.

Each stage was carefully planned and sequenced to maintain plant operations while delivering long-term improvements to the site's durability, safety and operational performance.

## PROJECT HIGHLIGHTS

Delivered across multiple project stages while maintaining operations within a live manufacturing facility.

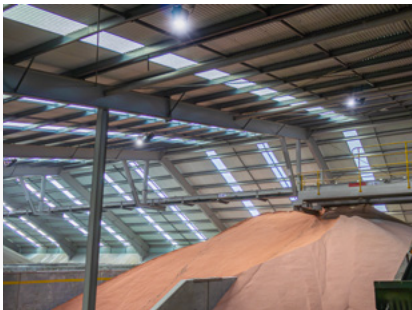
Completed extensive structural steel recoating using specialised industrial protective coating systems to maximise asset life.

Installed more than 3,000m<sup>2</sup> of fibreglass roofing, new wall cladding, specialty-coated roof purlins and custom fabricated flashings.

Designed and fabricated a custom maintenance access platform featuring an engineered interlocked gate system, providing continuous fall protection where conventional handrails were not possible.

## OUTCOME

The Incitec Pivot Recladding Project demonstrates our ability to deliver complex industrial fabrication and refurbishment projects safely, efficiently and with minimal disruption to live operations. By combining workshop fabrication, engineering expertise and precise site installation, the project has extended the life of critical infrastructure while improving safety, and reliability.





**CLIENT: AQUATIQ**

**LOCATION: TAMWORTH, NSW**

**COMPLETION: ONGOING**

**DIVISIONS INVOLVED: FABRICATION + LABOUR HIRE**

FEATURED PROJECT

# AQUATIQ

## HYGIENE SYSTEM

### SCOPE OF WORKS

We have been engaged by Aquatiq to assist with the installation of a large-scale hygiene system within a new chicken processing facility in Tamworth, NSW. The system is designed to meet the operational needs of an initial 1.5 million birds per week production target, with infrastructure scaled to accommodate expansion to 3 million birds per week.

Our team provided pre-works and skilled labour hire, supporting the installation of over 18 kilometres of piping, 200 hose reels, and 500 belt-cleaning spray bars throughout the extensive 38,000 m<sup>2</sup> site.

### PROJECT HIGHLIGHTS

Collaborated with Aquatiq on a technically complex installation serving a major food production facility.

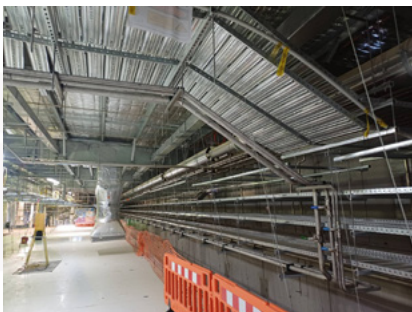
Delivered on-site support and fabrication expertise for a system spanning nearly 10 acres of operational space.

Coordinated works within a live construction environment, ensuring safety, precision, and minimal disruption to concurrent trades.

Contributed to a project designed for both current and future production scalability.

### OUTCOME

This project showcases Degree C's ability to support large-scale, technically demanding industrial installations outside Tasmania. Our partnership with Aquatiq demonstrates the versatility and reliability of our team in delivering quality outcomes for Australia's food and manufacturing sectors.







DC  
DEGREE C



## NORTH WEST

**ULVERSTONE**

2 FAIRAIR COURT  
EAST ULVERSTONE TAS 7315

03 6429 6800

## NORTH

**LAUNCESTON**

6 RICHARD STREET  
WESTERN JUNCTION TAS 7212

03 6345 9600



## SOUTH

**HOBART**

2 STANTON PLACE  
CAMBRIDGE TAS 7170

03 6277 5800



# DC

## DEGREE C

**1300 665 753**



**EXPLORE MORE**

[degrec.com.au](https://degrec.com.au)

Last revision July 2026