



CAPABILITIES STATEMENT

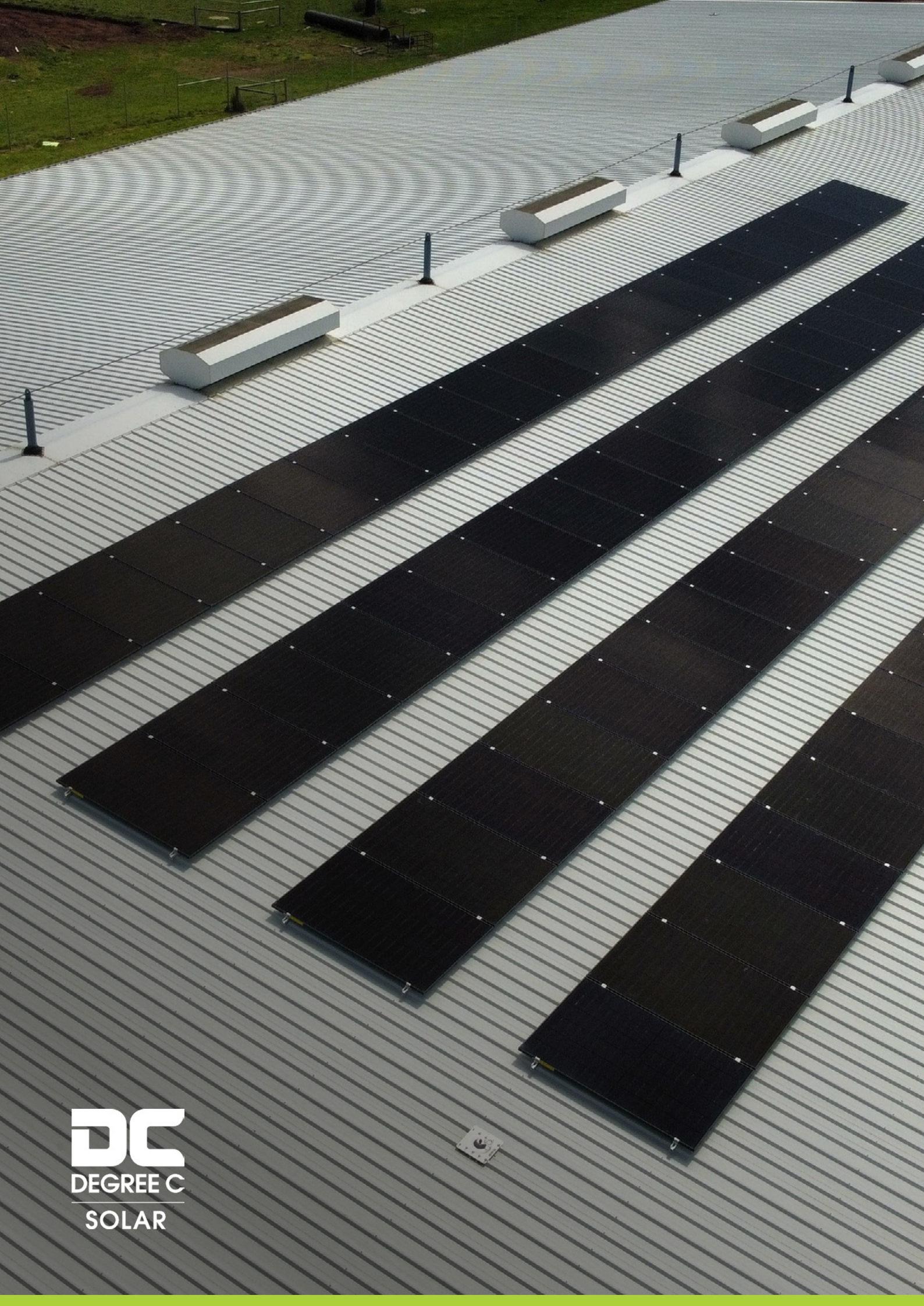
SOLAR & ENERGY STORAGE



INNOVATING ENERGY, ONE DEGREE AT A TIME

OUR SOLAR TEAM DELIVERS COMPLETE DESIGN, INSTALLATION, AND MAINTENANCE SOLUTIONS FOR RESIDENTIAL, COMMERCIAL, INDUSTRIAL, AND LARGE-SCALE PROJECTS. FROM GRID-CONNECTED SYSTEMS TO BATTERY INTEGRATION, WE PROVIDE HIGH-PERFORMANCE SOLAR SOLUTIONS THAT REDUCE OVERHEADS, IMPROVE RESILIENCE, AND SUPPORT A SUSTAINABLE ENERGY FUTURE.





DC
DEGREE C
SOLAR

TABLE OF CONTENTS

1. Company & People

- Our Company Details
- Message from the CEO
- Our Story: From local roots to state-wide leadership
- Services Overview
- Vision, Purpose and Values
- Management in Action: Quality, Safety, and Environment at work
- Meet the Team: Our organisation chart, and the faces behind the Degree C difference

2. Services & Capability

- Who We Work With; Industries we serve and our major clients
- Solar Services Overview
 - Consultation and Design
 - Installation

3. Featured Projects

- Industrial Processing Plant
- DECYP
- Northen Suburbs Sporting Hub
- St Lukes

4. Contact Us

- Branch locations, phone, and online details



OUR DETAILS

DEGREE C PTY LTD

ACN: 009 587 008

ABN: 16 009 587 008

2 FAIRAIR COURT

EAST ULVERSTONE TAS 7315

PHONE: (03) 6429 6800

EMAIL: INFO@DEGREEC.COM.AU

WEB: DEGREEC.COM.AU

OCCUPATIONAL CONTRACTORS

LICENCE NO. 945105

REFRIGERATION TRADING AUTHORITY

NO. AU01389

TASFIRE DRY FIRE SERVICES

LICENCE NO. 077

PUBLIC LIABILITY INSURANCE: MARKEL AUSTRALIA

POLICY NO CV9839A25IZA (\$20 MILLION)

WORKERS COMPENSATION: CGU INSURANCE

POLICY NO. O/10-10475





FROM THE CEO

At Degree C, we're proud to be Tasmania's largest and most diverse multi-trade company. For more than 60 years, we have delivered projects of every shape and size with a consistent focus on quality, safety, and reliability across every corner of the state.

Our diversity is our strength. With skilled tradespeople, managers, and engineers working across refrigeration, HVAC, electrical, and metal fabrication, we achieve results few others can. We operate across the residential sector, specialising in heating, cooling, and solar installations; the commercial sector, delivering large and complex projects in HVAC, fire detection, security, and electrical systems; and the industrial sector, where we provide electrical and instrumentation systems, industrial refrigeration plants, and complete metal fabrication projects from design through to manufacture and installation tailored to each client's needs.

Our dedicated service teams provide round-the-clock support in refrigeration, HVAC, fire, security, and electrical, ensuring peace of mind for our clients.

Our success is driven by our people. We strive to be the employer of choice across all disciplines, supporting our team to grow within the company and reach their full potential.

As we look ahead, our focus remains on providing solutions to our customers, supporting Tasmanian jobs, growing our people, and strengthening the partnerships that define our story. We're proud to deliver performance and professionalism to every degree.

- Tim Jordan



Our diversity is our strength.

FROM LOCAL ROOTS TO STATEWIDE SERVICE

OUR STORY

Degree C was established in Tasmania in the 1960s as a branch of a national industrial refrigeration company. Since then, Degree C has evolved to become a premier multi-trade contracting company. Locally owned since 1990, the company provides a diverse range of products and services to residential, commercial and industrial customers.

Today we employ more than 320 Tasmanians at three branch locations across the state, including more than 180 tradespeople and apprentices. Our six diverse business streams work collaboratively to deliver an extensive range of products and services to our broad client base.

The Degree C name in Tasmania means quality, capability and professionalism, and is widely recognised as a key component in the supply chain across numerous Tasmanian industry sectors.

Our presence in each of the major population centres in Tasmania, coupled with an unwavering focus on building strong local relationships, ensures that we are available and responsive to our clients' needs.



OUR SERVICES

1

ELECTRICAL SERVICES

CORE CAPABILITIES:

- Industrial Installations
- Commercial Installations
- Fire Services
- Data, Communications and Fibre Optic
- Security, CCTV & Access Control
- Solar Power and Battery Storage

2

MECHANICAL SERVICES

CORE CAPABILITIES:

- Commercial & Industrial Installations
- Heating & Cooling Systems
- General Exhaust Ventilation
- Kitchen Exhaust Ventilation
- Fuel & Medical Gas
- Drafting Services & BIM
- Residential Heating & Cooling

3

FABRICATION SERVICES

CORE CAPABILITIES:

- Sheetmetal Products
- Industrial Insulation & Cladding
- Processing Systems
- General Fabrication
- Industrial Pipe Work
- Fabrication Design & Engineering



REFRIGERATION SERVICES

4

CORE CAPABILITIES:

- Traditional Cold Rooms & Refrigeration
- Industrial & Commercial Refrigeration
- Process Cooling & Heating
- Maintenance & Repair
- Fruit & Vegetable Cooling & Storage
- Refrigeration Design & Engineering

SERVICE & REPAIR

5

CORE CAPABILITIES:

- 24/7 Breakdown Response
- Scheduled Maintenance & Servicing
- Electrical Fault Diagnosis & Repairs
- HVAC & Refrigeration Servicing
- Preventative Maintenance Planning
- Asset Tracking & Reporting
- Fire system inspections, testing and reporting

FIRE PROTECTION

6

CORE CAPABILITIES:

- Sprinkler Installation & Testing
- Fire Hydrant Installation and Flow Testing
- Fire Extinguishers and Fire Hose Reels Services
- Fire Suppression & Special Hazards
- Asset Management, Maintenance & Reporting
- 24-hour Emergency Response





OUR VISION

To be the most influential multi-disciplined trades-based company in our state, with powerful market presence in all of our business sectors.

Our brand is our reputation for an uncompromising approach to maximising customer benefit, competitiveness, innovation and to the employment of the very best people in our industries.

OUR PURPOSE

To promote economic, social, and environmental benefits for our communities and our stakeholders through the provision of specialist trade products and services to industry.

OUR VALUES

We put our people first in every decision we make.

We protect, nurture, and trust in each other.

We are truthful and equitable in every action we take.

We engage adversity to build our strength and drive continuous reform.



EFFICIENCY Our focus.



SUSTAINABILITY Our future.



INNOVATION Our edge.

QUALITY, SAFETY, AND ENVIRONMENT

MANAGEMENT IN ACTION

Degree C's Integrated Management System brings together quality, occupational health and safety, and environmental management – ensuring every project is delivered to the highest professional and regulatory standards.

Our systems are third-party audited and accredited, providing confidence to our clients and teams that every process, procedure, and outcome meets nationally recognised benchmarks.



Degree C only uses accredited installers for solar and battery systems to ensure customers are eligible for all Government incentives on offer, with multiple accredited persons within the business. Accreditation provides a high level of quality assurance, with only appropriately licensed and skilled persons gaining accreditation. Solar Accreditation Australia (SAA) also requires accredited persons to continue professional development to ensure knowledge and skills remain current with respect to updated technologies, Standards and Regulations.



Degree C is a New Energy Tech Approved Seller. We are committed to consumer protection standards for solar, battery storage, EV chargers and more.



✓ Designed by peak industry and consumer bodies

✓ Authorised by the ACCC

✓ Standards for the complete customer journey

QUALITY

Quality management at Degree C covers every stage of a project - from tendering and negotiation through to planning, monitoring, and post-implementation review. We focus on continuous improvement, ensuring our work consistently meets and exceeds client expectations.

SAFETY

Safety underpins everything we do. Our workplace health and safety systems provide structure, support, and compliance across all levels. Every supervisor holds a Certificate III in OHS, and our SQE team's WHS-qualified professionals drive a proactive, safety-first culture.



ENVIRONMENT

We take environmental responsibility seriously. Management and staff work together to reduce environmental risk through training, innovation, and accountable project delivery. Every team member plays a part in minimising impact and supporting sustainable outcomes for Tasmania's future.

WE HOLD THIRD-PARTY CERTIFICATION FOR:

ISO 9001:2015 - Quality Management Systems

ISO 45001:2018 - Occupational Health & Safety Management Systems

ISO 14001:2015 - Environmental Management Systems



MEET THE TEAM

FACES BEHIND THE DEGREE C DIFFERENCE

At Degree C, our greatest strength has always been our people. From apprentices learning their craft to project managers leading complex installations, every member of our team plays a vital role in delivering the quality, safety, and innovation our clients trust us for.

We're proud to employ more than 320 Tasmanians across three locations, representing a diverse mix of trades, talents, and experiences. Together, we share a common goal – to build, connect, and contribute to the future of our state.

Our people bring more than technical expertise to the job. They bring integrity, pride, and the passion to find smarter, safer, and more sustainable ways to work. Their dedication is what turns plans into projects, and projects into progress.

This is the team behind the Degree C name; hardworking, skilled, and committed to doing great work for every client, every day.





TIM JORDAN
**Chief Executive Officer & General
Manager of North West Operations**

An electrician by trade, Tim has worked in the industry for over 25 years and built his career at Degree C, from working on the tools as a tradesperson to now serving as CEO.

He's passionate about delivering high-quality service and practical solutions for our clients, while creating an environment where our people can grow and succeed.

Committed to continuous learning, he has completed a Diploma in Project Management, the Tasmanian Leaders Program, the Australian Institute of Company Directors Course, and a Master of Business Administration.

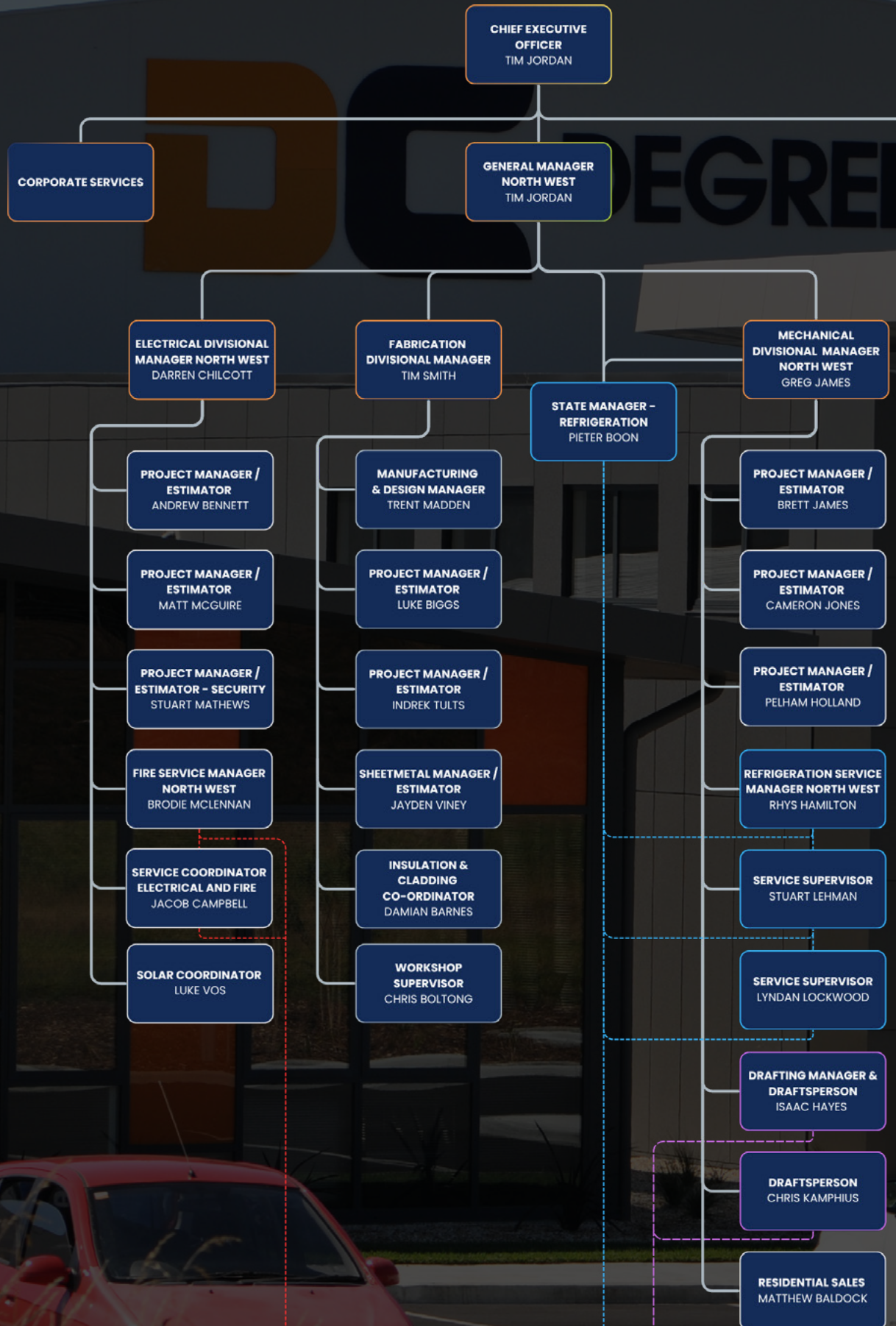


CRAIG RIBBON
**General Manager
North / South Regions**

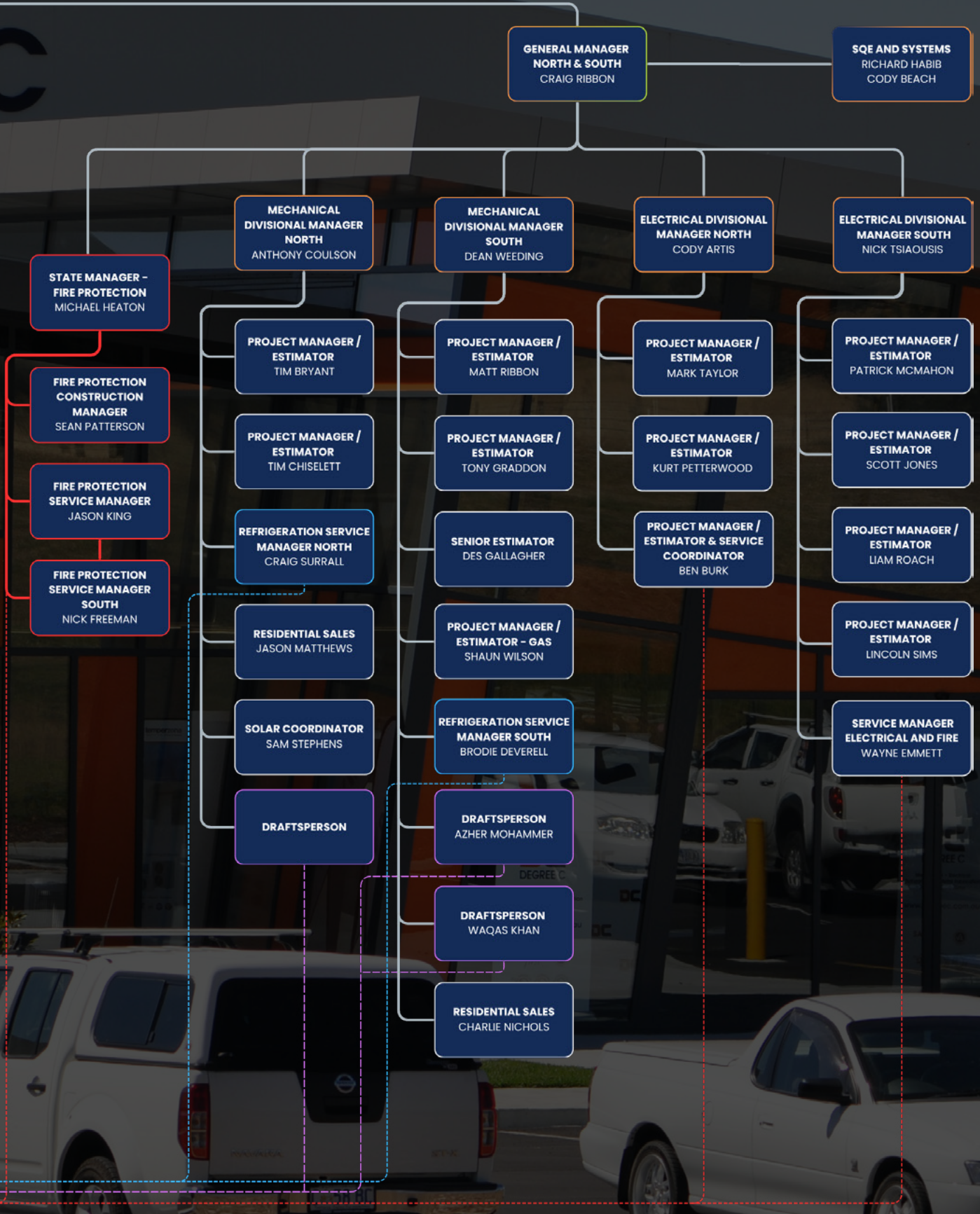
With more than 25 years of experience in the electrical and mechanical services industry, Craig has built a career centred on leading high-performing teams to deliver quality outcomes across complex and technically demanding projects.

Beyond project delivery, Craig is deeply committed to developing people and strengthening organisational capability. He takes pride in fostering a culture of excellence where collaboration, accountability, and continuous improvement are part of everyday operations.

ORGANISATION CHART



BOARD
 CHAIRMAN: CRAIG EDMUNDS
 CHIEF FINANCIAL OFFICER: MARK NUGENT
 CHIEF EXECUTIVE OFFICER: TIM JORDAN
 NON EXECUTIVE DIRECTOR: MICHAEL ROGERS
 DIRECTOR: CRAIG RIBBON



OUR SOLAR TEAM

ANTHONY COULSON **Divisional Manager**

Anthony brings over three decades of hands-on industry experience, with 32 years as a qualified electrician. For the past 13 years, he has specialised in designing, installing, and managing solar energy and battery storage projects.

Alongside his technical expertise, Anthony has spent 14 years in management roles, leading teams and projects with a strong focus on quality, efficiency, and long-term performance.

- Certificate III in Electrotechnology
- Electrical Practitioner's License
- SAA PV Grid-Connect Design & Install Accreditation
- Certificate IV in Work Health and Safety
- Work Safely at Heights
- High Risk Work License (forklift, EWP)
- Manual handling
- Construction Induction (White Card)
- Registration to Work With Vulnerable People

SAMUEL STEPHENS **Project Manager – Solar Specialist**

Sam brings 17 years of experience designing, installing, and managing solar energy and battery projects, with expertise across systems up to 180kW. As a qualified electrician, he combines strong technical knowledge with extensive hands-on experience to deliver reliable, high-performance energy solutions. Sam's depth of industry experience ensures projects are executed efficiently, safely, and to the highest standard.

- Certificate III in Electrotechnology
- Electrical Practitioner's License
- SAA PV Grid-Connect Design & Install Accreditation
- SAA Battery Grid-Connect Design & Install Accreditation
- Work Safely at Heights
- High Risk Work License (forklift, EWP)
- Manual handling
- Construction Induction (White Card)
- Registration to Work With Vulnerable People

LUKE VOS **Project Manager – Solar Specialist**

Luke brings 23 years of experience as a qualified electrician, with the past 7 years focused on designing, installing, and managing solar energy and battery projects. His strong technical foundation is complemented by five years as Operations Manager for a renewable energy company, where he oversaw project delivery, team coordination, and operational performance. Luke's blend of hands-on expertise and leadership experience ensures projects are delivered efficiently, safely, and to the highest standard.

- Certificate III in Electrotechnology
- Electrical Practitioner's License
- SAA PV Grid-Connect Design & Install Accreditation
- SAA Battery Grid-Connect Design & Install Accreditation
- Work Safely at Heights
- High Risk Work License (forklift)
- Manual handling
- Construction Induction (White Card)
- Registration to Work With Vulnerable People

TYLER WICKHAM **Leading Hand Solar Electrician**

Tyler has 10 years of experience as a qualified electrician, including the past 6 years specialising in solar and battery system installations. His strong electrical background, combined with hands-on renewable energy experience, ensures every system is installed safely, efficiently, and to the highest standard. Tyler takes pride in delivering reliable, high-quality energy solutions for every project.

- Certificate III in Electrotechnology
- Electrical Practitioner's License
- SAA PV Grid-Connect Design & Install Accreditation
- SAA Battery Grid-Connect Design & Install Accreditation
- Work Safely at Heights
- High Risk Work License (forklift, EWP)
- Manual handling
- Construction Induction (White Card)
- Registration to Work With Vulnerable People





COMMERCIAL

We deliver complete mechanical, electrical, and building systems for offices, retail centres, and multi-use developments across Tasmania.

From concept to completion, our projects are designed for performance, safety, and long-term efficiency - supporting businesses that power local economies.



HEALTH

We play a vital role in Tasmania's healthcare infrastructure, providing safe, reliable, and compliant systems for hospitals, medical centres, laboratories, and aged-care facilities. Our work ensures essential services operate seamlessly, supporting patient wellbeing and clinical performance every day.



MANUFACTURING

We support Tasmania's manufacturing sector with precision-engineered systems that protect product quality and streamline production. Our technicians understand the unique requirements of manufacturing and provide responsive service to minimise downtime.



EDUCATION

We partner with schools, universities, and training facilities to create sustainable, high-performing learning environments. From HVAC and lighting to safety systems and renewable energy, our integrated solutions help educational institutions focus on what matters most - the success of their students.



GOVERNMENT

Degree C is proud to support local councils, state departments, and community organisations with dependable, compliant, and sustainable infrastructure. Our work spans public facilities, essential services, and civic spaces - projects that contribute directly to Tasmania's growth and liveability.



AQUACULTURE

From hatcheries to processing plants, our expertise keeps the aquaculture industry running smoothly. We design systems that maintain stable water and product temperatures, improve energy efficiency, and meet strict environmental and food safety standards.



HOSPITALITY

From boutique restaurants and hotels to national retail outlets, our team delivers end-to-end solutions that balance functionality, aesthetics, and energy performance. Every system is designed to enhance customer comfort, meet safety standards, and operate efficiently in high-demand environments.



AGRICULTURE

Degree C partners with Tasmania's agricultural and industrial sectors, providing refrigeration, mechanical, and automation solutions that improve efficiency and reliability. We help primary producers, processors, and manufacturers operate sustainably and meet growing demand with confidence.

SOME OF OUR MAJOR CLIENTS

ASHGROVE

CEMENT
AUSTRALIA

Fresh
Freight

Betta
MILK

DAIKIN

EST. G 1933
Greenham

bhpbilliton

Extractas
Bioscience

HARVEST
MOON

Botanical Resources
AUSTRALIA

Fairbrother

hazellbros

Cadbury

Fonterra

(JBS)
HUON

Superior
food services

SRTlogistics

TASMANIAN ICE CREAM
VALHALLA

JAMES BOAG
EST 1881 TAS

tassal.
TASSAL GROUP

Bidfood





SOLAR SERVICES OVERVIEW

Degree C offers unparalleled levels of skill and diversity delivering solar power and energy storage projects. We have a large team of specialised managers, designers and technicians allowing us to deliver any project no matter how unique or challenging. From design to commissioning, and ongoing maintenance, our high level of experience allows us to work with clients the whole way through a project.

With our three offices across the state, we offer our services to all areas of Tasmania.

Our extensive range of services include:

- Grid-connected solar power design and installation
- Hybrid and ac-coupled battery energy storage design and installation
- Solar power system inspection, testing and maintenance
- Battery system inspection, testing, and maintenance
- Residential installation
- Commercial installation
- Fabrication of mechanical protection components
- Design and installation of solar switchboards, interface protection and metering
- Energy Management Systems
- Site assessments Tasmania wide
- After-sales technical and warranty support



DC
DEGREE C
SOLAR

CONSULTATION & DESIGN

Our experienced solar specialists carry out a comprehensive on-site assessment, we evaluate roof orientation and pitch, available space, shading, switchboard capacity, and your current energy usage to determine the most efficient and cost-effective system design.

From initial consultation and tailored system design through to installation, grid connection, and ongoing support, we provide a complete end-to-end solution — ensuring your solar investment delivers maximum performance, long-term reliability, and real savings from day one.



OUR DESIGN PROCESS

- Switchboard inspection
- Roof layout and shading assessment
- Energy bill review and tariff analysis
- System performance estimate
- Product selection and procurement
- Incentives, discounts and grants application
- TasNetworks connection application
- Site-specific engineering certification (if required)
- Building Surveyor engagement and Council permit
- Drawings for construction
- Risk assessment and site management planning
- Safe Work Method Statements (SWMS) inductions and permits
- Works program preparation
- AC and DC system calculations including:
 - ◊ fixing spacings
 - ◊ DC voltage drop
 - ◊ AC voltage rise
 - ◊ over-current protection and isolator sizing
- Ensuring all workers are licensed and competent
- Fabrication of custom components such as distribution boards, interface protection, flashings, cages, and awnings/covers
- Delivery of materials
- Delivery and setup of access equipment
- Implementation of safety systems

INSTALLATION

SOLAR ARRAY INSTALLATION

1. All work carried out by competent workers in accordance with SWMS and applicable standards
2. Install permanent and temporary safety systems
3. Measure and mark-out solar panel layout as per construction drawings
4. Install solar mounting hardware as per manufacturer guidelines and site-specific engineering certificate
5. Install cable tray (if required)
6. Pre-wire the DC cabling and array earthing
7. Lift solar panels to the roof using panel lifter, elevated work platform or scaffolding.
8. Install solar panels and complete DC cabling connections at roof level
9. Terminate DC cables at disconnections points, isolators or combiner fuse boxes as designed
10. Install cable tray covers and flashings
11. Affix labels for DC system at roof level



SWITCHBOARD & INVERTER INSTALLATION

1. Work carried out by licensed electricians as per SWMS and applicable standards
2. Measure and mark-out inverter, distribution board and cabling locations as per the construction drawings
3. Install backing boards, mounting brackets and make wall penetrations for DC and AC cabling
4. Install cable tray and/or conduit
5. Mount inverter/s and terminate DC cabling
6. Rough-in AC and communications cabling
7. Install distributions board, interface protection and isolators
8. Terminate AC and communications cabling
9. Affix solar system labelling to cabling, isolators, inverters, switchboards and meter enclosure



TESTING & COMMISSIONING

1. Conduct pre-commissioning inspection and testing of DC systems
2. Conduct pre-commissioning inspection and testing of AC systems
3. Rectify any defects found
4. Test and commission DC systems with results recorded in the user documentation
5. Test and commission AC systems with results recorded in the user documentation
6. Test and commission communications network
7. Create a monitoring site and verify system monitoring data
8. Complete system documentation
9. Complete Certificate of Electrical Compliance



DE-MOBILISATION

1. Remove rubbish and excess materials from work areas
2. Decommission temporary safety systems
3. Remove access equipment from site
4. Finish patch and paint if required
5. Clean and tidy all work areas
6. Train owners and facilities managers on safe operation, start-up, shutdown, monitoring and maintenance procedures

POST-INSTALLATION

1. Complete TasNetworks connection verification
2. Finalise Building Surveyor certification
3. Submit Government incentives claim
4. Invoicing
5. After-sales and warranty support provided in-house
6. Ongoing monitoring and maintenance if required in the defects and liability period



FEATURED PROJECT

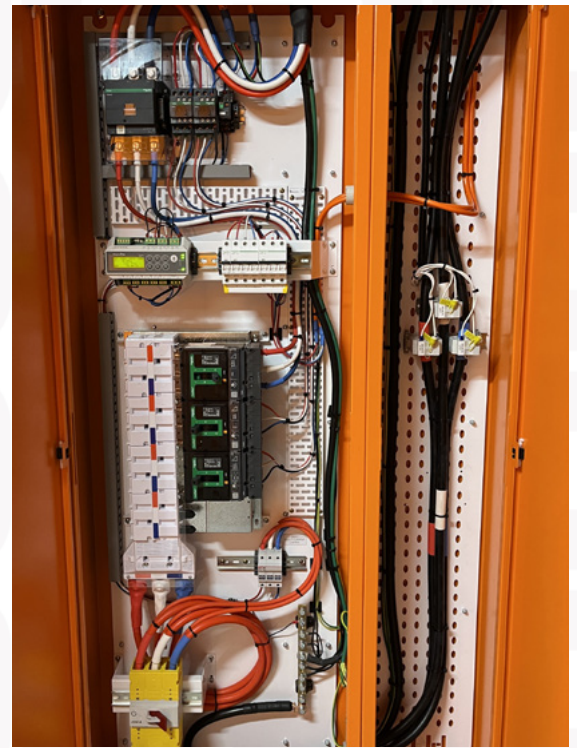
INDUSTRIAL PROCESSING PLANT

174KW SOLAR + 66KWH BATTERY

This challenging project involved the design and construction of a large hybrid solar energy system on a factory roof with multiple skylights. This required design and installation of a rooftop walkway and safety system prior to the solar installation.

The design utilised the latest commercial, bifacial 585W solar panels from Suntech, with multiple Fronius inverters and BYD battery stacks for a combined capacity of 174kW of solar and 66kWh of energy storage.

The installation also includes a custom cage designed and built locally, bollards and line marking by an SME subcontractor, and a new solar distribution board with integrated interface protection manufactured in Tasmania by Progress Control & Engineering.



FEATURED PROJECT

DECYP TRANCHE 2

117KW SOLAR

Degree C was engaged to install 4 solar power systems for the Department for Education, Children and Young People (DECYP).

The installations took place during the weekend or school holiday periods to minimise disruption to student learning.

All systems were designed using the highly efficient and reliable GoodWe 3-phase inverter range from 15 to 50kW. The latest 440W N-Type solar modules from Suntech were also used for all systems to ensure reliability and high solar gain.

Degree C will be installing the next round of installations based on the performance delivering these school projects.



FEATURED PROJECT

NORTHERN SUBURBS COMMUNITY HUB

95KW SOLAR + 120KWH BATTERY

Degree C recently completed its largest battery project as part of the Northern Suburbs Community Hub in Launceston.

The 120kWh battery capacity is delivered by 3 parallel systems of Sigenery 40kWh battery stacks and charged via a 95kW solar array of Suntech's bifacial 585W panels.

The large, multi-purpose facility required the system spread across multiple distribution centres, but mounted in a single plant room, which the SigenStor system handles easily with an adaptable and scalable design.

The SigenStor system features advanced lithium-ion battery technology in a scalable design with AI-optimized energy management and integrated fire suppression, making it a safe, efficient, and future-proof solution.



FEATURED PROJECT

ST LUKES

30KW SOLAR

A 30kW solar PV system was installed by Degree C on the new office building in Launceston for St Lukes Health.

This multi-storey building brought the additional logistical challenge of craning equipment 30m to the roof and plant deck in a limited working area.

Installation had to be scheduled around the construction of the new building, so we worked closely with the primary contractor, Fairbrother Construction, and other contractors on site to deliver the project on time.

The system uses popular Suntech panels and a GoodWe inverter with a custom awning design and fabricated in Launceston. The awning was laser-cut and powder coated to match the surrounding surfaces.





NORTH WEST

ULVERSTONE

2 FAIRAIR COURT
EAST ULVERSTONE TAS 7315

03 6429 6800

NORTH

LAUNCESTON

6 RICHARD STREET
WESTERN JUNCTION TAS 7212

03 6345 9600



SOUTH

HOBART

2 STANTON PLACE
CAMBRIDGE TAS 7170

03 6277 5800



DC DEGREE C

1300 665 753



EXPLORE MORE

degreec.com.au

Last revision July 2026