



↘ TASMANIA'S LEADING MULTI-TRADE CONTRACTOR

CAPABILITIES STATEMENT

FROM THE CEO

Tim Jordan shares his vision for innovation and growth at Degree C.

EVERY DEGREE COUNTS

Exploring our people. Our projects. Our pride.

INSIDE DEGREE C

HOW TASMANIA'S LEADING MULTI-TRADE CONTRACTOR CONTINUES TO RAISE THE BAR





TABLE OF CONTENTS

1. From the CEO

- Tim Jordan shares his vision for innovation, collaboration, and Tasmania's future.

2. Company & Culture

- Our Story: From local roots to state-wide leadership
- Management in Action: Quality, Safety, and Environment at work
- Meet the Team: Faces behind the Degree C difference

3. Services & Capability

- Our Multi-Trade Expertise
- Industries We Service
- Major Clients
- Electrical Services
- Mechanical Services
- Fabrication & Metalwork
- Refrigeration Services
- Fire Protection

4. Community & Partnerships

- Supporting Tasmanian and giving back to the communities we serve

5. Contact Us

- Branch locations, phone, and online details



FROM THE CEO

At Degree C, we're proud to be Tasmania's largest and most diverse multi-trade company. For more than 60 years, we have delivered projects of every shape and size with a consistent focus on quality, safety, and reliability across every corner of the state.

Our diversity is our strength. With skilled tradespeople, managers, and engineers working across refrigeration, HVAC, electrical, and metal fabrication, we achieve results few others can. We operate across the residential sector, specialising in heating, cooling, and solar installations; the commercial sector, delivering large and complex projects in HVAC, fire detection, security, and electrical systems; and the industrial sector, where we provide electrical and instrumentation systems, industrial refrigeration plants, and complete metal fabrication projects from design through to manufacture and installation tailored to each client's needs.

Our dedicated service teams provide round-the-clock support in refrigeration, HVAC, fire, security, and electrical, ensuring peace of mind for our clients.

Our success is driven by our people. We strive to be the employer of choice across all disciplines, supporting our team to grow within the company and reach their full potential.

As we look ahead, our focus remains on providing solutions to our customers, supporting Tasmanian jobs, growing our people, and strengthening the partnerships that define our story. We're proud to deliver performance and professionalism to every degree.

- Tim Jordan



Our diversity is our strength.

FROM LOCAL ROOTS TO STATEWIDE SERVICE

OUR STORY

Degree C was established in Tasmania in the 1960s as a branch of a national industrial refrigeration company. Since then, Degree C has evolved to become a premier multi-trade contracting company. Locally owned since 1990, the company provides a diverse range of products and services to residential, commercial and industrial customers.

Today we employ more than 320 Tasmanians at three branch locations across the state, including more than 180 tradespeople and apprentices. Our six diverse business streams work collaboratively to deliver an extensive range of products and services to our broad client base.

The Degree C name in Tasmania means quality, capability and professionalism, and is widely recognised as a key component in the supply chain across numerous Tasmanian industry sectors.

Our presence in each of the major population centres in Tasmania, coupled with an unwavering focus on building strong local relationships, ensures that we are available and responsive to our clients' needs.



QUALITY, SAFETY, AND ENVIRONMENT

MANAGEMENT IN ACTION

Degree C's Integrated Management System brings together quality, occupational health and safety, and environmental management – ensuring every project is delivered to the highest professional and regulatory standards.

Our systems are third-party audited and accredited, providing confidence to our clients and teams that every process, procedure, and outcome meets nationally recognised benchmarks.



Our values guide more than our work – they shape our culture. They're reflected in how we support apprentices, celebrate achievements, communicate with clients, and contribute to our local communities.

At Degree C, our success isn't measured only by the projects we complete, but by the way we work together to achieve them.



QUALITY

Quality management at Degree C covers every stage of a project - from tendering and negotiation through to planning, monitoring, and post-implementation review. We focus on continuous improvement, ensuring our work consistently meets and exceeds client expectations.

SAFETY

Safety underpins everything we do. Our workplace health and safety systems provide structure, support, and compliance across all levels. Every supervisor holds a Certificate III in OHS, and our SQE team's WHS-qualified professionals drive a proactive, safety-first culture.



ENVIRONMENT

We take environmental responsibility seriously. Management and staff work together to reduce environmental risk through training, innovation, and accountable project delivery. Every team member plays a part in minimising impact and supporting sustainable outcomes for Tasmania's future.

WE HOLD THIRD-PARTY CERTIFICATION FOR:

ISO 9001:2015 - Quality Management Systems

ISO 45001:2018 - Occupational Health & Safety Management Systems

ISO 14001:2015 - Environmental Management Systems



MEET THE TEAM

FACES BEHIND THE DEGREE C DIFFERENCE

At Degree C, our greatest strength has always been our people. From apprentices learning their craft to project managers leading complex installations, every member of our team plays a vital role in delivering the quality, safety, and innovation our clients trust us for.

We're proud to employ more than 280 Tasmanians across three locations, representing a diverse mix of trades, talents, and experiences. Together, we share a common goal – to build, connect, and contribute to the future of our state.

Our people bring more than technical expertise to the job. They bring integrity, pride, and the passion to find smarter, safer, and more sustainable ways to work. Their dedication is what turns plans into projects, and projects into progress.

This is the team behind the Degree C name; hardworking, skilled, and committed to doing great work for every client, every day.





TIM JORDAN
**Chief Executive Officer & General
Manager of North West Operations**

An electrician by trade, Tim has worked in the industry for over 25 years and built his career at Degree C, from working on the tools as a tradesperson to now serving as CEO.

He's passionate about delivering high-quality service and practical solutions for our clients, while creating an environment where our people can grow and succeed.

Committed to continuous learning, he has completed a Diploma in Project Management, the Tasmanian Leaders Program, the Australian Institute of Company Directors Course, and a Master of Business Administration.



CRAIG RIBBON
**General Manager
North / South Regions**

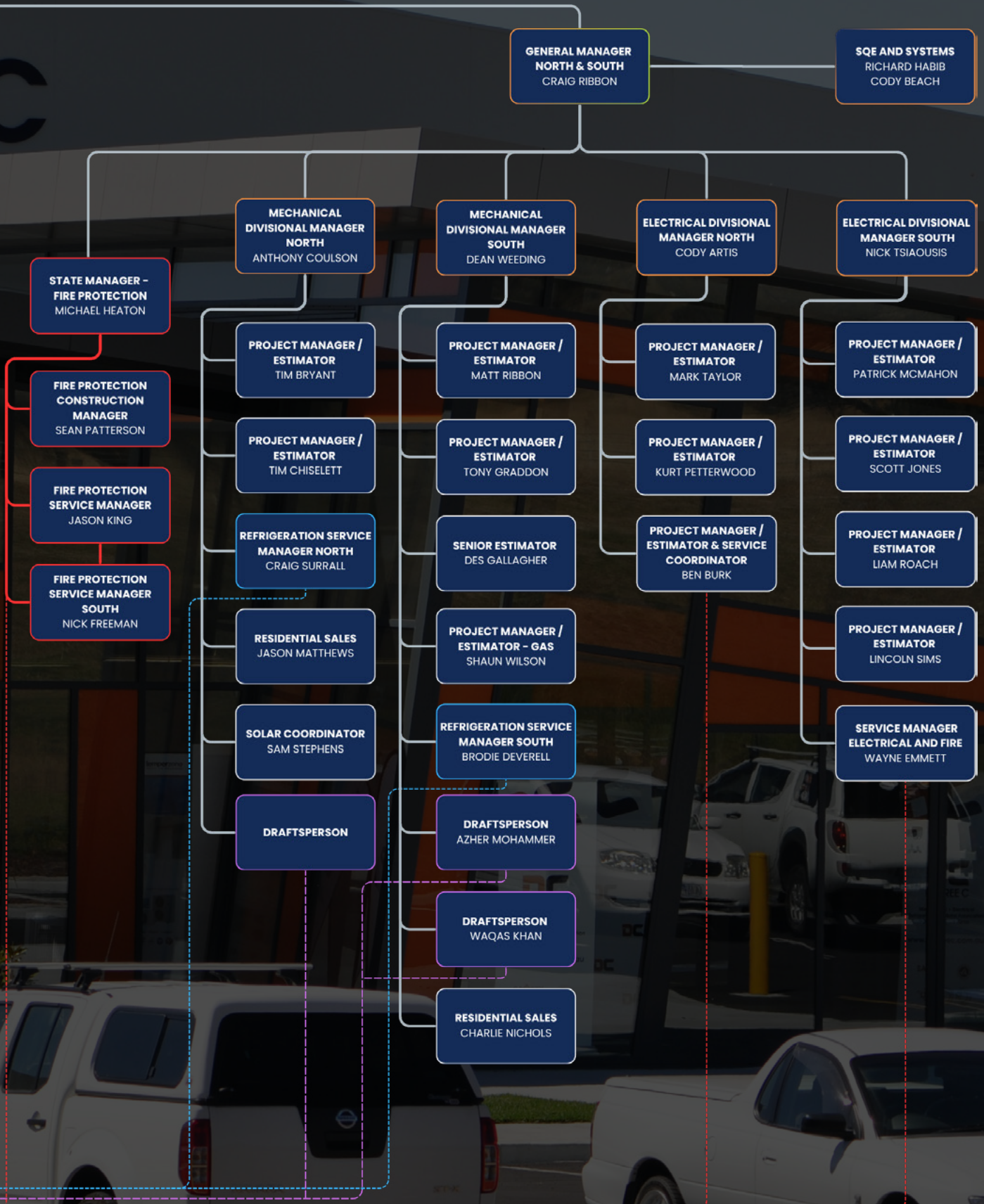
With more than 25 years of experience in the electrical and mechanical services industry, Craig has built a career centred on leading high-performing teams to deliver quality outcomes across complex and technically demanding projects.

Beyond project delivery, Craig is deeply committed to developing people and strengthening organisational capability. He takes pride in fostering a culture of excellence where collaboration, accountability, and continuous improvement are part of everyday operations.

ORGANISATION CHART



BOARD
 CHAIRMAN: CRAIG EDMUNDS
 CHIEF FINANCIAL OFFICER: MARK NUGENT
 CHIEF EXECUTIVE OFFICER: TIM JORDAN
 NON EXECUTIVE DIRECTOR: MICHAEL ROGERS
 DIRECTOR: CRAIG RIBBON





DANGER
LIVE
EQUIPMENT DC

COMPREHENSIVE MULTI-TRADE
SERVICES ACROSS TASMANIA

DELIVERING TO EVERY DEGREE

For more than sixty years, Degree C has been delivering expert, integrated trade services across Tasmania's residential, commercial, and industrial sectors. Our in-house teams combine specialised skills, industry experience, and local knowledge to design, install, and maintain systems that perform reliably, efficiently, and safely.

We provide a complete range of mechanical, electrical, and fabrication solutions - supported by dedicated specialists in solar, refrigeration, fire protection, gas, and security systems. From large-scale infrastructure to individual homes, every project is backed by the same professionalism, attention to detail, and commitment to quality that define Degree C.

With teams based in Ulverstone, Launceston, and Hobart, we're proud to deliver smart, sustainable services that keep Tasmania's homes, businesses, and industries running at their best, every day, in every region, to every degree.

We work with every customer to create a tailored maintenance plan that meets their specific needs. Every plan will offer the highest quality of service:

- Preventative service and repairs
- Monthly and annual checks
- Service documentation including sign-in register, service schedule, reports and repair details
- 24/7 on-call service
- Automated service and maintenance reminders
- Highest standard of service





COMMERCIAL

We deliver complete mechanical, electrical, and building systems for offices, retail centres, and multi-use developments across Tasmania.

From concept to completion, our projects are designed for performance, safety, and long-term efficiency - supporting businesses that power local economies.



HEALTH

We play a vital role in Tasmania's healthcare infrastructure, providing safe, reliable, and compliant systems for hospitals, medical centres, laboratories, and aged-care facilities. Our work ensures essential services operate seamlessly, supporting patient wellbeing and clinical performance every day.



RESIDENTIAL

Our residential services bring quality and reliability into Tasmanian homes through trusted local service.

Our team works with homeowners and builders to design and install heating, cooling, and solar systems that improve comfort, lower energy costs, and deliver lasting value. There is no job too big or small for us.



EDUCATION

We partner with schools, universities, and training facilities to create sustainable, high-performing learning environments. From HVAC and lighting to safety systems and renewable energy, our integrated solutions help educational institutions focus on what matters most - the success of their students.



GOVERNMENT

Degree C is proud to support local councils, state departments, and community organisations with dependable, compliant, and sustainable infrastructure. Our work spans public facilities, essential services, and civic spaces – projects that contribute directly to Tasmania’s growth and liveability.



ENTERTAINMENT

We deliver mechanical and electrical systems that support entertainment venues, sports complexes, and cultural institutions across the state. From temperature control to lighting design, our work ensures safe, comfortable, and dynamic environments where Tasmanians gather, perform, and connect.



HOSPITALITY & RETAIL

From boutique restaurants and hotels to national retail outlets, our team delivers end-to-end solutions that balance functionality, aesthetics, and energy performance. Every system is designed to enhance customer comfort, meet safety standards, and operate efficiently in high-demand environments.



AGRICULTURE

Degree C partners with Tasmania’s agricultural and industrial sectors, providing refrigeration, mechanical, and automation solutions that improve efficiency and reliability. We help primary producers, processors, and manufacturers operate sustainably and meet growing demand with confidence.

SOME OF OUR MAJOR CLIENTS

ASHGROVE

CEMENT
AUSTRALIA

Fresh
Freight

DAIKIN

McCain

EST. 1933
Greenham

IXOM



Extractas
Bioscience

HARVEST
MOON

Botanical Resources
AUSTRALIA



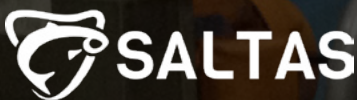
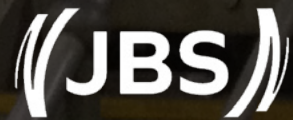
Fairbrother

hazellbros

Cadbury

Fonterra™

(JBS)
HUON





DC
DEGREE C

ELECTRICAL

POWERING PROGRESS WITH
PRECISION AND PERFORMANCE.

Degree C Electrical Services delivers unmatched expertise and versatility, backed by a large team of specialised managers, designers, and technicians. We're equipped to manage projects of any scale or complexity, from concept and design through to commissioning and statutory maintenance. With extensive experience across a wide range of sectors, we work in partnership with clients to ensure every outcome is efficient, compliant, and built to last.

Our team designs and installs advanced security and CCTV systems for projects of any size, providing detailed documentation, equipment layouts, and camera view plans. We also deliver end-to-end communication solutions, including structured and fibre-optic cabling, wireless access points, and network links—all certified and backed by full warranties.

We're proficient in PLC programming (Allen-Bradley, Schneider) and advanced lighting control systems such as C-Bus, DALI, and Dynalite. From automation and control to energy management, we integrate cutting-edge technology to enhance performance and reliability.

Degree C provides the full spectrum of electrical services, including exit and emergency light testing, lighting and power repairs, large-scale process breakdowns, test and tag, thermal imaging, RCD testing, and fire detection maintenance. Our highly skilled technicians are dedicated to resolving issues quickly to minimise downtime and maintain operational continuity.

For complete peace of mind, our 24/7 call-out service ensures that support is always available when you need it most.

OUR SERVICES INCLUDE

- Lighting, Power & Installations: Traditional, industrial, and commercial electrical works.
- Data, Communications & Fibre Optics: Certified and warrantied structured cabling systems.
- Security & Access Systems: CCTV, and access control.
- All areas of fire detection including design, installation and maintenance.
- Automation & Control: Instrumentation, PLC programming, and CITECT/SCADA systems.
- Energy & Renewables: Solar power, battery storage, and energy monitoring and management.
- Advanced Lighting Control: C-Bus, DALI, and Dynalite smart lighting systems.
- High & Medium Voltage: Power distribution and infrastructure installations.
- Hazardous Area Works: Certified installations for high-risk environments.
- Audio Visual & MATV: Commercial entertainment and communication systems.
- Drafting, Maintenance & Support: Electrical design, 24/7 repairs, and ongoing service.





MULTIPURPOSE

CLIENT: CITY OF LAUNCESTON
LOCATION: MOWBRAY, TASMANIA
DIVISIONS INVOLVED: ELECTRICAL
PROJECT VALUE: \$2,600,000

FEATURED PROJECT

NORTHERN SUBURBS COMMUNITY RECREATION HUB

SCOPE OF WORKS

Degree C delivered the complete electrical and technology package for the Northern Suburbs Community Recreation Hub, creating one of Tasmania's most advanced multi-purpose sporting facilities.

Our scope included electrical distribution, DALI-controlled sports and architectural lighting, communications infrastructure, CCTV, access control, dry fire systems, a 99kW solar PV system and intelligent EV charging.

The project also incorporated five communications racks, eight security panels and multiple distribution boards, all integrated into a future-ready building technology platform designed to support community, regional and state-level sporting events.

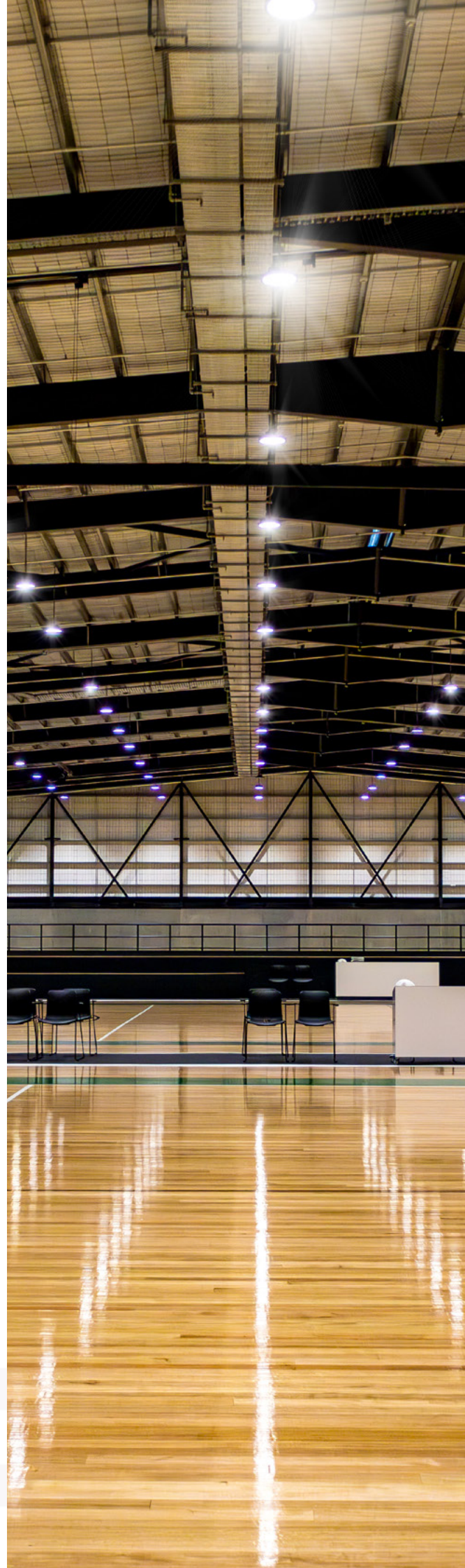
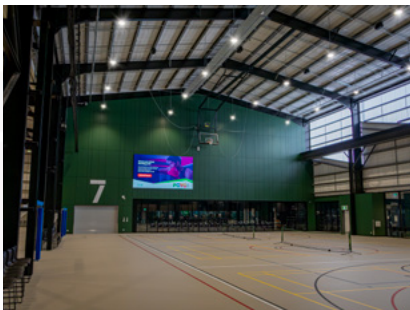
Working closely with the builder and consultants, Degree C ensured every system operated as one intelligent, scalable solution.

PROJECT HIGHLIGHTS

Delivered across more than 6,300 hours, the project combined advanced electrical infrastructure, renewable energy and smart building technology to create a flexible, energy-efficient community facility.

A standout feature is the fully programmable DALI lighting system, allowing lighting levels to be adjusted for everything from training sessions to national-level competition while reducing energy consumption.

Integrated solar, EV charging, communications and security systems complete a modern, future-ready sporting hub built to serve the community for many years.





CLIENT: PROCREATE
LOCATION: HOBART, TASMANIA
DIVISIONS INVOLVED: ELECTRICAL
PROJECT VALUE: \$2,500,000

FEATURED PROJECT

PROCREATE GLOBAL HEADQUARTERS

SCOPE OF WORKS

Degree C delivered the complete electrical and technology package for the new Procreate Global Headquarters in Hobart, creating a future-ready workplace for one of the world's leading digital design companies.

Our scope included power, architectural lighting, communications, security, access control, dry fire systems and the installation of more than 900 data points supported by a high-performance fibre optic backbone.

The project also included a custom communications rack room, automated lighting controls, specialist power solutions, and a dedicated cinema and presentation space featuring the largest Apple TV installation in the Southern Hemisphere.

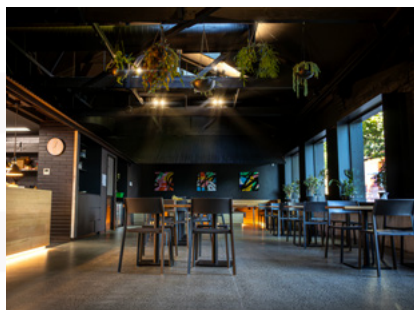
Working closely with the client and project team, Degree C also redesigned cable pathways and expanded the electrical and communications infrastructure to ensure the building could support Procreate's long-term growth and evolving operational requirements.

PROJECT HIGHLIGHTS

Delivered over 20,000 hours across an 18-month program, the project demanded exceptional coordination within a live, evolving construction environment.

With more than 100 project variations and 20 design revisions, our team played a key role in refining the electrical design, optimising communications infrastructure and integrating advanced building technologies without impacting programme or quality.

The result is a seamless combination of architectural lighting, intelligent building systems and mission-critical communications infrastructure that supports Procreate's global software development operations.





CLIENT: TAS PORTS

LOCATION: DEVONPORT, TASMANIA

**DIVISIONS INVOLVED: ELECTRICAL
& FABRICATION**

PROJECT VALUE: \$135,000

FEATURED PROJECT

AIKENHEAD POINT COASTAL LIGHTING UPGRADE

SCOPE OF WORKS

Degree C delivered the complete design, fabrication and installation of a new public lighting system for the Aikenhead Point coastal walkway and viewing platform in Devonport.

The project replaced traditional pole lighting with an innovative handrail-integrated solution, improving pedestrian safety while preserving the natural coastal landscape.

Our scope included the fabrication and installation of 290 metres of polished handrails with integrated conduit, installation of 160 low-energy LED handrail lights, and seamless integration with the existing site infrastructure.

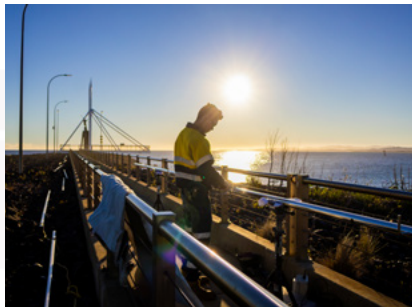
Designed specifically for harsh marine conditions, the system provides consistent, low-impact illumination while significantly reducing ongoing maintenance requirements.

PROJECT HIGHLIGHTS

This project required close collaboration between our electrical and fabrication teams to deliver a lighting solution that was both technically advanced and visually unobtrusive.

By integrating lighting directly into the handrail system, Degree C eliminated the need for traditional lighting poles, reducing visual clutter while creating a premium public space that complements the surrounding coastal environment.

The installation was carefully designed to comply with Australian lighting standards, minimise light spill, and protect nearby wildlife, including local penguin and marine habitats.





CLIENT: DEVONPORT CITY COUNCIL
LOCATION: DEVONPORT, TASMANIA
VALUE: \$3 MILLION
HOURS WORKED: 4,300
DIVISIONS INVOLVED: ELECTRICAL AND
FABRICATION

FEATURED PROJECT

DEVONPORT SOUND & LIGHT SHOW

SCOPE OF WORKS

Degree C was engaged by Devonport City Council to deliver the full electrical and fabrication works for the Devonport Sound and Light Show, a 14-minute nightly performance in the Devonport Waterfront Park telling the story of the Mersey River's journey from Cradle Mountain to Bass Strait.

The project included the design, fabrication, and installation of twelve feature pillars and six internal pillars, as well as stainless-steel lighting rails beneath the rotunda. Each pillar houses DMX-controlled lighting, LED video screens, and speakers, creating a synchronised visual and audio experience.

Scope of works also covered the construction of footings, installation of underground and relocated services, new switchboard and control cabinet, communications rack, multi-head CCTV system, fibre optic cabling into council infrastructure, and integration with the Dante audio control system.

PROJECT HIGHLIGHTS

Valued at \$3 million and delivered across 4,300 hours, the project showcased Degree C's multi-trade capability, bringing together electrical, fabrication, design, and project management teams to achieve a technically complex, high-precision installation within a highly visible public space.

The team developed custom fabrication techniques to achieve seamless, vandal-resistant lighting pillars with minimal internal shadowing.

OUTCOME

The Devonport Sound and Light Show stands as a testament to Tasmanian innovation, craftsmanship, and collaboration. The project delivered a durable, low-maintenance, and visually stunning landmark installation that celebrates local heritage through art and technology.

The end result: a world-class public installation that merges artistry, engineering, and sustainability, proudly designed and built by Degree C.





CLIENT: MUSEUM OF OLD AND NEW ART
LOCATION: HOBART, TASMANIA
DIVISIONS INVOLVED: ELECTRICAL
PROJECT VALUE: \$280,000

FEATURED PROJECT

SPECTRA INSTALLATION

SCOPE OF WORKS

Degree C was engaged to supply and install power, data, and audio-visual services for the world-renowned Spectra light installation at the Museum of Old and New Art (MONA) in Hobart, Tasmania.

An 800-amp electrical supply was designed and installed to power the 49 high-intensity searchlights, each projecting beams of light up to 15 kilometres into the sky.

The project also included fibre optic cabling to a new communications rack housing security, CCTV, and audio-visual infrastructure, ensuring seamless performance and integration across the site.

Two dedicated distribution boards were installed to serve the landscape lighting and power services, along with a 300 kVAr Power Factor Correction Unit to optimise system efficiency and stability.

PROJECT HIGHLIGHTS

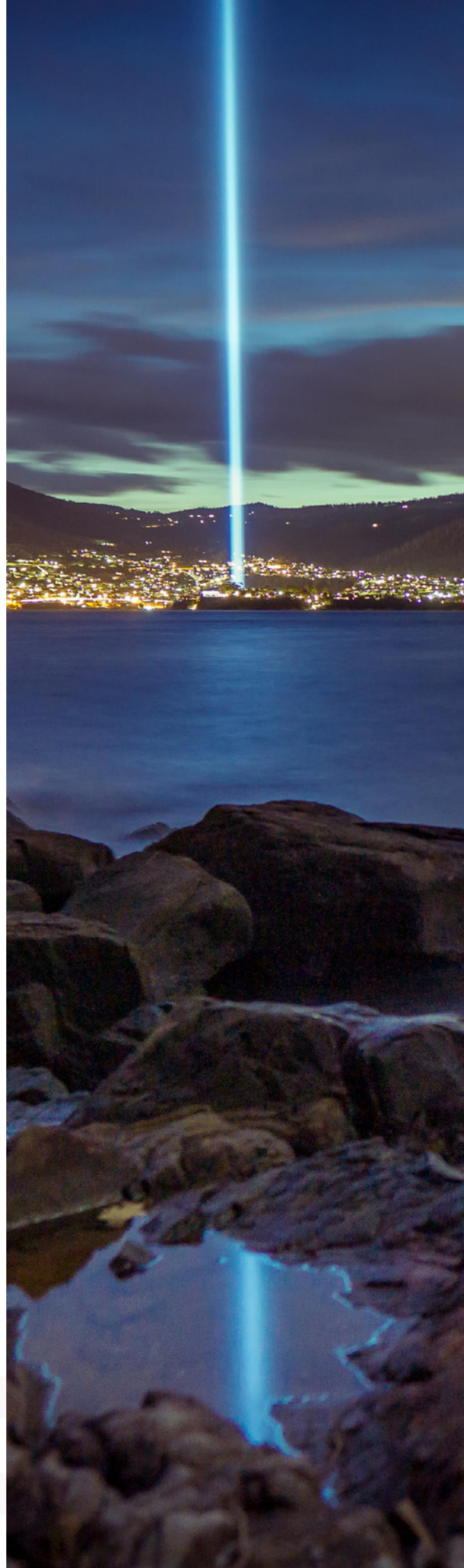
This technically complex installation required precise electrical design, high-capacity infrastructure, and close collaboration with the project's teams.

The high electrical demand and unique artistic requirements of Spectra demanded innovative solutions to balance power delivery, safety, and reliability without disrupting the existing museum operations.

OUTCOME

The successful completion of the Spectra Installation at MONA demonstrated Degree C's capability to deliver large-scale, technically demanding electrical and data systems for high-profile, creative, and public environments.

The installation remains a landmark feature in Tasmania's cultural landscape, a testament to Degree C's precision, innovation, and commitment to excellence in electrical and communications engineering.





CLIENT: TASMANIAN HEALTH SERVICE
LOCATION: LATROBE, TASMANIA
VALUE: \$5.3 MILLION
HOURS WORKED: 16,000 HOURS
DIVISIONS INVOLVED: ELECTRICAL, FIRE,
AND SECURITY

FEATURED PROJECT

MERSEY COMMUNITY HOSPITAL

OUTPATIENTS & OPERATING THEATRES

SCOPE OF WORKS

Degree C was engaged to deliver the complete electrical services package for the \$45 million redevelopment of the Mersey Community Hospital in Latrobe, Tasmania. The multi-stage project expanded and upgraded critical healthcare infrastructure, including new operating theatres, endoscopy procedure rooms, outpatient clinics, and a day-surgery centre, all designed to enhance patient care and streamline hospital operations.

Works were executed within a live hospital environment, requiring careful planning, staged implementation, and continuous coordination to maintain power and essential services throughout construction.

PROJECT HIGHLIGHTS

Operating in an active hospital required staged works and precise coordination to maintain essential services. Key achievements included safe delivery of major power shutdowns, a redesign of the UPS room to meet clearance standards, and development of a remote-access CCTV system for helipad safety, now being considered for other sites. Energy-efficient lighting and smart controls further improved sustainability and long-term performance.

OUTCOME

The Mersey Community Hospital redevelopment stands as one of Tasmania's most significant healthcare infrastructure upgrades.

Degree C's electrical team successfully delivered high-reliability systems for critical care areas, ensuring compliance, safety, and continuity of essential services while maintaining hospital operations.





MECHANICAL

COMFORT, PERFORMANCE, AND
RELIABILITY - TO EVERY DEGREE.

Degree C Mechanical Services is Tasmania's leading contractor in commercial and industrial HVAC, with more than 30 years of proven experience delivering projects across major sectors.

Operating from Ulverstone, Launceston, and Hobart, we combine engineering expertise, innovative design, and hands-on trade capability to deliver end-to-end mechanical solutions that perform.

Our in-house team includes qualified mechanical services plumbers, refrigeration mechanics, and gas fitters, backed by skilled draftspeople who transform complex designs into practical, client-focused installations.

This fully integrated approach ensures precision, efficiency, and quality at every stage of the project, from open-tender

builds to large-scale design-and-construct developments.

Degree C's scope of work covers the full spectrum of HVAC and mechanical systems, including air conditioning, ventilation, chilled and heating water systems, hydronic heating, fuel and gas services, compressed air, and steam systems. We also specialise in advanced solutions such as computer room cooling, fume extraction, and chemical processing systems - ensuring every environment we build is safe, efficient, and sustainable.

Trusted by clients in commerce, hospitality, education, manufacturing, mining, and food processing, Degree C continues to set the standard for mechanical services across Tasmania - delivering performance and reliability that stand the test of time.

OUR SERVICES INCLUDE

- Commercial heating and cooling systems
- Residential heating and cooling systems
- General exhaust ventilation
- Kitchen exhaust ventilation
- Fuel and medical gas
- Drafting services and BIM
- Ducted and split system air conditioning
- Chemical and dust fume extraction
- Reticulated chilled and heating water systems
- Hydronic floor heating systems
- Fuel gas systems
- Industrial gas systems
- Medical gas systems
- Compressed air
- Steam systems
- Data centre process cooling





CLIENT: UNIVERSITY OF TASMANIA
LOCATION: HOBART TAS
VALUE: \$6.5 MILLION +
DIVISIONS INVOLVED: MECHANICAL,
REFRIGERATION, AND ELECTRICAL

FEATURED PROJECT

THE HEDBERG

University of Tasmania

SCOPE OF WORKS

Degree C supplied and installed the heating, chilled water, and ventilation systems for the seven-level Hedberg performing arts precinct in Hobart.

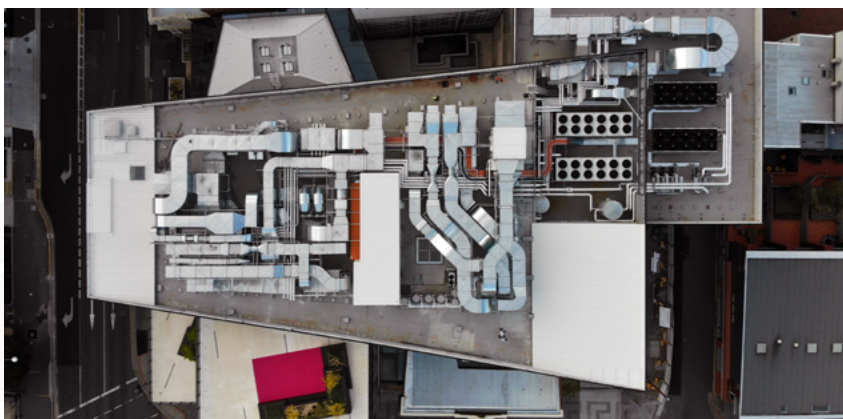
The project covered recital halls, studios, classrooms, laboratories, kitchens, administration areas, and included complex refurbishment works within the historic Theatre Royal, requiring precision installation in confined spaces.

PROJECT HIGHLIGHTS

This BIM and Aconex-managed project utilised BIM 360 for inspections and coordination.

Major equipment included VRF systems, chillers, heat pumps, AHUs, heat reclaim ventilators, fans, and mechanical electrical controls.

Valued at \$6.5+ million and delivered over a 24-month program, the Hedberg showcased Degree C's expertise in integrating advanced HVAC solutions within architecturally and operationally complex environments.





CLIENT: DEVONPORT CITY COUNCIL
LOCATION: DEVONPORT, TASMANIA
VALUE: \$3.75 MILLION
DIVISIONS INVOLVED: MECHANICAL,
REFRIGERATION, AND ELECTRICAL

FEATURED PROJECT

PARANAPLE CENTRE & PROVIDORE MARKET PLACE

SCOPE OF WORKS

Degree C delivered complete heating, chilled water, and ventilation systems for the four-level Paranaple Centre, which houses the Devonport Library, Service Tasmania, Devonport City Council offices, meeting rooms, and the Convention Centre.

At Providore Place, works included radiant gas heating, toilet and general exhaust systems, and refrigeration systems serving multiple back-of-house tenancies.

PROJECT HIGHLIGHTS

Major equipment included Daikin chillers, natural gas boilers, custom-built air handling units, chilled and heating water fan coils, radiant gas heaters, and full mechanical electrical controls.

Delivered over a 24-month program, the \$3.75 Million project showcased Degree C's capability to integrate large-scale commercial HVAC systems across diverse public facilities.





FABRICATION

PRECISION ENGINEERED.
BUILT TO LAST.



Degree C's Fabrication Division is a Tasmanian leader in the design and manufacture of high-quality steel, stainless steel, aluminium, and sheet metal products. With more than 25 years of experience, we've built a reputation for precision, reliability, and customer-focused service. Our state-of-the-art manufacturing facility employs over 30 highly skilled tradespeople who manage projects from design through to fabrication, installation, and final commissioning, ensuring quality outcomes at every stage.

Our expertise spans air-conditioning ductwork, tanks, chutes, conveyors, benches, and toolboxes, as well as insulation and cladding for steam, refrigeration, and vessel systems. We deliver energy-efficient, noise-reduction, and protective solutions designed to meet rigorous industry standards.

Our team also specialises in stainless steel and process pipe work, alongside the design, installation, and modification of complex processing systems that support industrial operations.

Supported by advanced computerised manufacturing technology, Degree C produces a wide range of general and structural products, including platforms, walkways, access stairs, ladders, tray backs, and custom toolboxes. We proudly service clients across sectors such as agriculture, aquaculture, building and construction, food processing, mining, pharmaceuticals, energy, water treatment, and transport. Whatever the scale or complexity, our fabrication solutions are built for durability, performance, and safety, crafted to exceed expectations, every time.

OUR SERVICES INCLUDE

Sheetmetal Products:

- Air-conditioning duct and units
- Tanks, storage units and bins
- Chutes
- Materials handling systems
- Conveyors
- Tables, benches and trolleys
- Custom made toolboxes

Industrial Insulation & Cladding for:

- Steam and cold pipe systems
- Hot and cold vessels
- Metal cladding
- External duct work insulation
- Noise reduction

Industrial Pipe Work

- Steam and refrigeration pipe work
- Stainless Steel pipe and tube systems

Processing Systems

Our team is experienced in the delivery of complex and customised processing systems to meet individual customer requirements. We can install new systems or upgrade and modify your existing machinery.

General Fabrication

Computerised manufacturing processes enable the fabrication of a wide range of general products designed to meet your unique specifications:

- Platforms and walkways
- Access stairs and ladders
- Structural steel work
- Customised tray backs and toolboxes





CLIENT: AQUATIQ
LOCATION: TAMWORTH, NSW
COMPLETION: ONGOING
DIVISIONS INVOLVED: FABRICATION +
LABOUR HIRE

FEATURED PROJECT

AQUATIQ

HYGIENE SYSTEM

SCOPE OF WORKS

We have been engaged by Aquatiq to assist with the installation of a large-scale hygiene system within a new chicken processing facility in Tamworth, NSW. The system is designed to meet the operational needs of an initial 1.5 million birds per week production target, with infrastructure scaled to accommodate expansion to 3 million birds per week.

Our team provided pre-works and skilled labour hire, supporting the installation of over 18 kilometres of piping, 200 hose reels, and 500 belt-cleaning spray bars throughout the extensive 38,000 m² site.

PROJECT HIGHLIGHTS

Collaborated with Aquatiq on a technically complex installation serving a major food production facility.

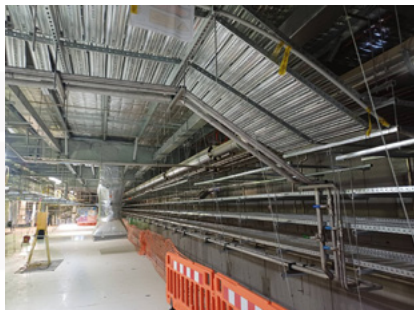
Delivered on-site support and fabrication expertise for a system spanning nearly 10 acres of operational space.

Coordinated works within a live construction environment, ensuring safety, precision, and minimal disruption to concurrent trades.

Contributed to a project designed for both current and future production scalability.

OUTCOME

This project showcases Degree C's ability to support large-scale, technically demanding industrial installations outside Tasmania. Our partnership with Aquatiq demonstrates the versatility and reliability of our team in delivering quality outcomes for Australia's food and manufacturing sectors.





CLIENT: INCITEC PIVOT LIMITED
LOCATION: DEVONPORT, TASMANIA
PROJECT STATUS: STAGES 1-3 COMPLETE
DIVISIONS INVOLVED: FABRICATION

FEATURED PROJECT

INCITEC PIVOT DEVONPORT

SCOPE OF WORKS

Degree C was engaged to deliver the staged recladding and structural refurbishment of the Incitec Pivot manufacturing facility in Devonport. Working within a live industrial environment, our team completed structural steel recoating, replacement of roof purlins, fibreglass roof and wall cladding, stainless steel flashings, and associated fabrication works.

Each stage was carefully planned and sequenced to maintain plant operations while delivering long-term improvements to the site's durability, safety and operational performance.

PROJECT HIGHLIGHTS

Delivered across multiple project stages while maintaining operations within a live manufacturing facility.

Completed extensive structural steel recoating using specialised industrial protective coating systems to maximise asset life.

Installed more than 3,000m² of fibreglass roofing, new wall cladding, specialty-coated roof purlins and custom fabricated flashings.

Designed and fabricated a custom maintenance access platform featuring an engineered interlocked gate system, providing continuous fall protection where conventional handrails were not possible.

OUTCOME

The Incitec Pivot Recladding Project demonstrates our ability to deliver complex industrial fabrication and refurbishment projects safely, efficiently and with minimal disruption to live operations. By combining workshop fabrication, engineering expertise and precise site installation, the project has extended the life of critical infrastructure while improving safety, and reliability.





CLIENT: SIMPLOT AUSTRALIA
LOCATION: ULVERSTONE, TASMANIA
COMPLETION: SEPTEMBER 2025
DIVISIONS INVOLVED: FABRICATION +
ELECTRICAL (CLIENT ENGAGED)

FEATURED PROJECT

WESP – SIMPLOT ULVERSTONE

SCOPE OF WORKS

Degree C was engaged to supply, fabricate and install structural steel to support and provide access to the new Wet Electrostatic Precipitator (WESP) system. Our scope included completing detailed shop drawings of stainless-steel ducting, supplying materials, fabricating all components in-house, and managing the full installation and commissioning of the WESP unit.

PROJECT HIGHLIGHTS

Delivered within a tight construction timeframe, maintaining schedule alignment with client operations.

Managed the complexity of installation on a live, operating factory site, requiring precise coordination and elevated safety standards.

All major works were executed on the roof, demanding strategic planning, safe lifting operations, and close collaboration with the client's engineering team.

OUTCOME

The successful delivery of the WESP project enhanced Simplot's air quality management systems, improved operational efficiency, and demonstrated Degree C's capability to execute complex industrial projects under challenging conditions with precision and safety.





REFRIGERATION

COOLING SOLUTIONS ENGINEERED
FOR PERFORMANCE.

Degree C's Refrigeration Division delivers complete design, installation, and maintenance services for commercial and industrial refrigeration systems across Tasmania. With decades of experience and in-house technical expertise, we provide tailored solutions that meet the unique operational and environmental demands of every client.

From concept and design through to commissioning and ongoing maintenance, our experienced team manages projects end to end, ensuring efficiency, reliability, and compliance at every stage.

We work closely with clients to develop energy-efficient systems that minimise running costs while maximising performance and product integrity.

Utilising advanced design tools and cutting-edge technology, Degree C has become the provider of choice for businesses seeking quality, innovation, and long-term dependability in their refrigeration systems.

With offices in Ulverstone, Launceston, and Hobart, we offer statewide coverage and a rapid-response, 24-hour call-out service, keeping your operations running smoothly, around the clock.

OUR EXTENSIVE RANGE OF SERVICES INCLUDES

- Industrial refrigeration
- Commercial installations
- Process cooling
- Heat reclaim and natural refrigerants
- Electrical wiring and controls
- Design and installation of cold rooms
- Design and installation of cold storage facilities
- Efficiency improvements
- Remote monitoring & logging
- Air handling units and duct work
- Maintenance and repair works
- 24-hour on-call service
- Project management and drafting services





CLIENT: LINK LOGISTICS
LOCATION: CAMBRIDGE (HOBART AIRPORT)
DIVISIONS INVOLVED: ELECTRICAL & REFRIGERATION

FEATURED PROJECT

LINK LOGISTICS – CO2 REFRIGERATION SYSTEM

SCOPE OF WORKS

Degree C managed the complete build of cool and freezer rooms along with the design and installation of the refrigeration system for Link Logistics' new refrigerated cold store facility at Cambridge, near Hobart Airport.

This project marked a significant milestone for Tasmania – the installation of the state's first trans-critical CO2 refrigeration system, utilising R744 (CO2) as a natural, energy-efficient refrigerant. The system was engineered to provide superior temperature control, reduced environmental impact, and long-term operational efficiency.

PROJECT HIGHLIGHTS

Delivered within an extremely tight timeframe, this greenfield project progressed from site commencement to system start-up in just three months. Coordinating multiple trades under accelerated conditions required precise project management, strategic scheduling, and close collaboration between Degree C's electrical and refrigeration divisions.

Despite the demanding schedule, the team successfully commissioned all cool and freezer rooms on time, allowing the client to move product into the facility as planned, demonstrating Degree C's capacity to deliver high-performance refrigeration systems under pressure.

OUTCOME

The successful delivery of Tasmania's first CO2 trans-critical refrigeration plant established Degree C as a leader in sustainable industrial refrigeration. The system not only reduced greenhouse gas emissions but also set a new benchmark in energy efficiency, reliability, and environmental innovation for large-scale cold storage facilities across the state.





CLIENT: MCCAIN FOODS
LOCATION: TASMANIA
DIVISIONS INVOLVED: REFRIGERATION
AND MECHANICAL



FIRE PROTECTION

EVERY DEGREE OF PROTECTION.



We deliver complete wet and dry fire protection solutions across Tasmania, supporting clients through every stage of the fire system lifecycle - from consultation, design and installation through to commissioning, testing, maintenance, inspections, upgrades, and ongoing compliance. Our experienced team works with commercial, industrial, healthcare, government, education, hospitality, manufacturing, and retail clients to deliver fire protection systems that are reliable, compliant, and built for the long-term.

With licensed technicians and extensive industry experience, we provide statewide support for fire detection and alarm systems, sprinkler systems, hydrants, hose reels, portable fire equipment, emergency and exit lighting, passive fire protection, and special hazard suppression systems.

Our Fire Protection Division works seamlessly alongside Degree C's electrical, mechanical, HVAC, and fabrication teams to deliver fully integrated building solutions. This coordinated approach simplifies project delivery, reduces risk, and provides clients with a single point of responsibility across multiple disciplines.

From routine inspections and preventative maintenance to complex system upgrades and emergency breakdown response, we provide dependable, statewide service backed by responsive local support.

We currently maintain fire protection systems across more than 100 sites throughout Tasmania, helping clients remain compliant, minimise risk, and ensure their critical fire infrastructure is always ready to perform when it's needed.

OUR EXTENSIVE RANGE OF SERVICES INCLUDES

- Fire detection & alarm systems
- Sprinkler systems
- Hydrant systems
- Hose reel installation & servicing
- Portable fire equipment
- Emergency & exit lighting
- Fire doors & passive fire
- Special hazard suppression systems
- Wet & dry fire system installation
- Testing, maintenance & compliance
- Fire system upgrades & fault repairs
- 24-hour emergency response



BUILDING CONNECTIONS THAT
STRENGTHEN TASMANIA

COMMUNITY & PARTNERSHIPS

We believe our success is measured not only by the projects we deliver, but by the impact we create beyond the job site. For more than 60 years, we've been part of the Tasmanian community, supporting local initiatives, investing in regional development, and helping create opportunities for people to thrive.

Our partnerships go beyond sponsorships; they're about connection, collaboration, and contribution. Whether it's mentoring apprentices, supporting local sports clubs, or partnering with councils to bring community events to life, we're proud to play an active role in shaping a stronger, more connected Tasmania.

Together, we're not just powering businesses and homes, we're helping build the communities that make Tasmania a great place to live, work, and grow.



SUMMER ON ICE

At Degree C, we're proud to support the communities where we live and work. In 2024, we partnered with the Central Coast Council as the Platinum Event Partner for Summer on Ice 2024, Tasmania's only outdoor artificial ice-skating event, held at the Wharf Precinct in Ulverstone.

This family-friendly festival brought together thousands of locals and visitors for two weeks of fun, activity, and connection in the heart of the North West Coast. As the naming sponsor, Degree C was featured throughout event promotions, including the tagline "Get your skates on with Degree C"- reinforcing our strong local presence and commitment to community wellbeing.

Our partnership helped make the event accessible for families by keeping ticket prices affordable, while also showcasing the value of local business collaboration in delivering memorable experiences for the community.

From supporting youth programs and local sports clubs to backing major regional events like Summer on Ice, Degree C remains committed to investing in initiatives that bring people together and strengthen the communities we're proud to serve.



SPONSORSHIP & PARTNERSHIPS WE HAVE BEEN INVOLVED IN

- Silver Sponsor Wynyard BMX Club
- SeaFM Winter Appeal
- Gold Sponsor Ulverstone Football Club
- Central Coast Chamber of Commerce & Industry
- Special Children's Christmas Party
- South Launceston Football Club Player Sponsor
- Signature Sponsor Cancer Council Tasmania NW Gala
- Devonport Basketball Club Player Sponsor
- Oscar O'Donovan Racing Sponsor
- Formula Vee Competitor Sponsor
- Latrobe Basketball Association Scoreboard Sponsorship
- George Town Football Club Player Sponsor
- Mersey Valley Cycling Club Carnival
- St Patricks College Lap It Up Sponsorship
- Central Coast Council Summer on Ice
- Clown Doctors Australia





OUR DETAILS

DEGREE C PTY LTD

ACN: 009 587 008

ABN: 16 009 587 008

PHONE: (03) 6429 6800

EMAIL: INFO@DEGREEC.COM.AU

WEB: DEGREEC.COM.AU

OCCUPATIONAL CONTRACTORS

LICENCE NO. 945105

REFRIGERATION TRADING AUTHORITY

NO. AU01389

TASFIRE DRY FIRE SERVICES

LICENCE NO. 077

PUBLIC LIABILITY INSURANCE: MARKEL AUSTRALIA

POLICY NO CV9839A25IZA (\$20 MILLION)

WORKERS COMPENSATION: CGU INSURANCE

POLICY NO. O/10-10475

Last revision July 2026





NORTH WEST

ULVERSTONE

2 FAIRAIR COURT
EAST ULVERSTONE TAS 7315

03 6429 6800

NORTH

LAUNCESTON

6 RICHARD STREET
WESTERN JUNCTION TAS 7212

03 6345 9600



SOUTH

HOBART

2 STANTON PLACE
CAMBRIDGE TAS 7170

03 6429 6801

